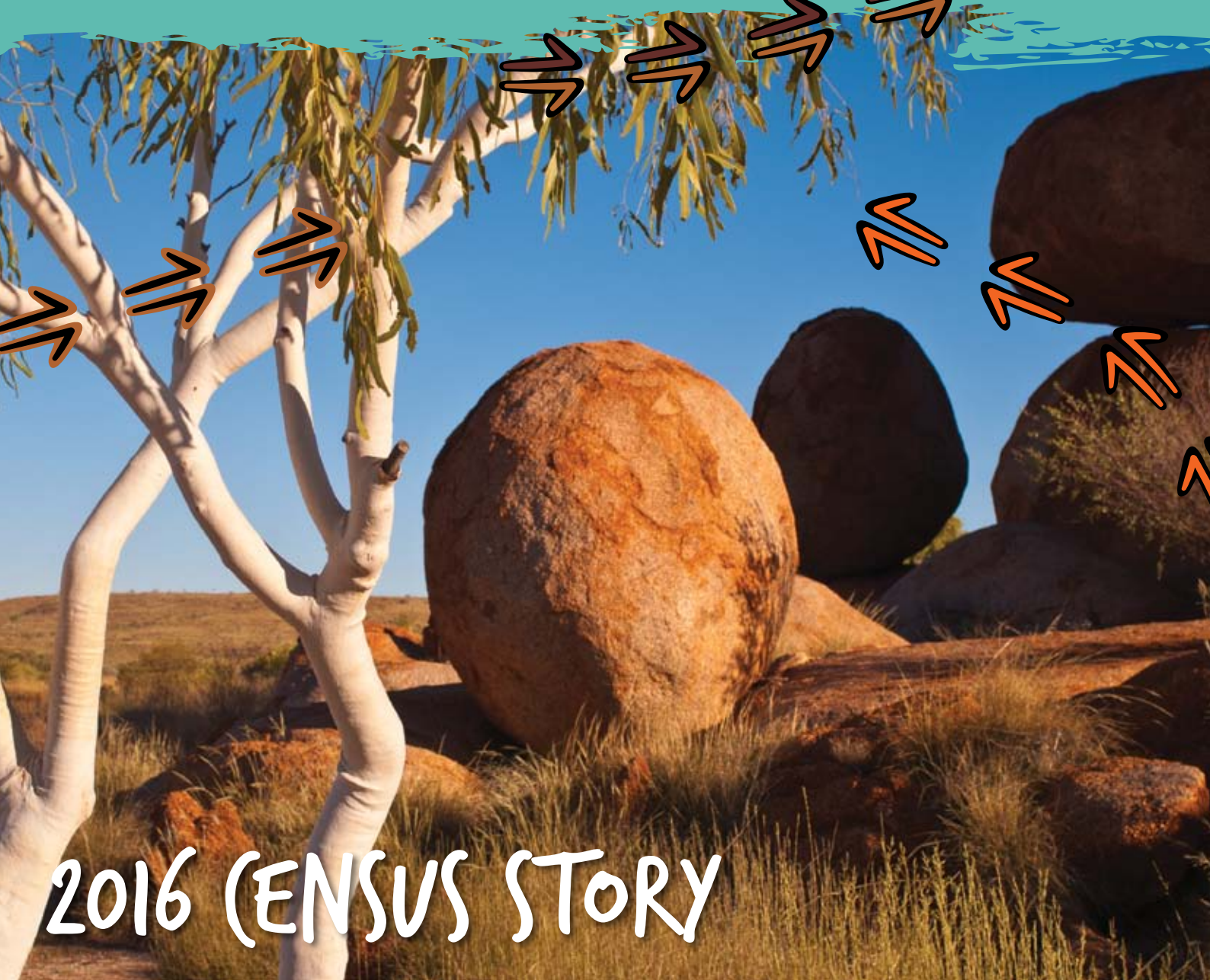


NORTHERN TERRITORY

# Barkly



## 2016 (CENSUS STORY



NORTHERN TERRITORY

# Barkly



2016 CENSUS STORY

## Glossary

<b>Caring for Children</b>	People who spent time caring for a child/children (under 15 years) without pay in the two weeks prior to Census night.
<b>Children</b>	Are people aged under 15 years of age.
<b>Completed Year 12</b>	Includes people aged 15 years and over who are no longer attending primary or secondary school.
<b>Families</b>	Includes couple families with and without children, single parents, and other families.
<b>Houses</b>	Includes private dwellings, occupied and unoccupied. A dwelling is a structure which is intended to have people live in it, and which was habitable on Census night, for example houses, flats, caravans and humpies.
<b>Language</b>	Top Australian Indigenous language spoken at home.
<b>People</b>	Total population figures are based on place of 'usual residence' or where that person usually lives.
<b>Students</b>	Includes everyone who said they were attending a school, university or technical institution.
<b>Weekly Income</b>	Includes people aged 15 years and over and is the middle value (median) of total weekly personal income.
<b>Working</b>	Includes everyone who said they were working full-time or part-time, or were away from work. This does not include people involved in the Community Development Program (CDP).

# Contents

Glossary	2
Artwork	4
The ABS says thanks	5
Australia	6
Northern Territory	7
Barkly Region	8
Ali Curung	10
Alpurrurulam	12
Ampilatwatja	14
Atneltyey	16
Canteen Creek	18
Elliott	20
Imangara	22
Irrultja	24
Kargaru	26
Marla Marla - Village Camp	28
Newcastle Waters	30
Ngalpa Ngalpa - Wuppa	32
Tara	34
Tennant Creek exc. Town Camps	36
Utopia - Arawerr - Arlparra	38
Wutunugurra	40
Know more	44



## Artwork

The artwork in this story book was commissioned by the Centre of Excellence for Aboriginal and Torres Strait Islander Statistics to embody what the centre represents. The work incorporates Larrakia Artist Shaun Lee's (AKA Gwarkabah's) diverse heritage, through contemporary and traditional hand-created designs. Using spray-paint medium on hardwood, the work features and combines various traditional stories and symbols from local areas and across Australia. Together, the artwork tells the story of the Centre of Excellence and its people. The designs were digitalised by Dreamtime Creative.



## Traditional stories and symbol break down



**Star shape:** National courage – representing navigation, called the 'Guiding Star'.

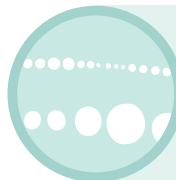
**Core centre design:** Black represents the earth and the soil; the pattern symbolises an 'ageless recognition' used through Northern Australia, and perhaps wider Australia. An 'ageless recognition' is the closest translation into English. It's derived from a number of terms that describe an instant identification of a particular established symbol of connection or linkage.



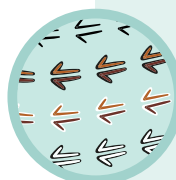
**Message sticks:** Representing unique messages; signifies that a story is being told and needs to be received.

Is a connection to and from Larrakia Country, and between other Indigenous cultures.

- **Top message stick:** Country and regions across Australia
- **Middle message stick:** Coming together and meeting
- **Bottom message stick:** Two half-moons facing inwards represents the people; and the two lines on either side identifies that the message is inclusive of both male and female.



**Dots:** Symbolises the link between people, organisations, States and Territories, representing the importance of strong linkage and communication. A dot in a dot in a dot: Traditional Larrakia design colours represent the artist's own diversity – his Northern Larrakia, Wardaman, Karrijarri heritage, and his acknowledgement of all of these people.



**Kangaroo tracks:** Acknowledge the journey and pathways that have been taken; and symbolises moving forward, as the kangaroo is known for not moving backwards.

**Track colours:** Represent diversity and the differences between people. The kangaroo is an iconic Australian animal, representing our uniqueness, and recognition Nationally.



**Paperbark vessel:** Carrying safely all the gathered information and knowledge

# THE ABS SAYS THANKS



The Australian Bureau of Statistics would like to thank the Aboriginal and Torres Strait Islander communities who helped to make the 2016 Census a success.

## Barkly, your numbers are in.

The results of our latest national Census reveal who we are, where we live, what we do, and where we're headed.

The information we've gathered will inform planning and decision-making for our future, like where we build schools, roads and hospitals. Census data helps us decide where we need funding and services across every community in Australia – this means your community, too!

So here is the story for Barkly – a living biography updated every five years.

### Future surveys

The ABS also has other surveys. We thank you in advance for your help in completing these. They may include questions about your health, employment or other details. You can see how this information helps your community at [www.abs.gov.au/participant-info](http://www.abs.gov.au/participant-info).



Photos by the Australian Bureau of Statistics, taken from the Jabiru township.

# Australia



**23.4**  
million

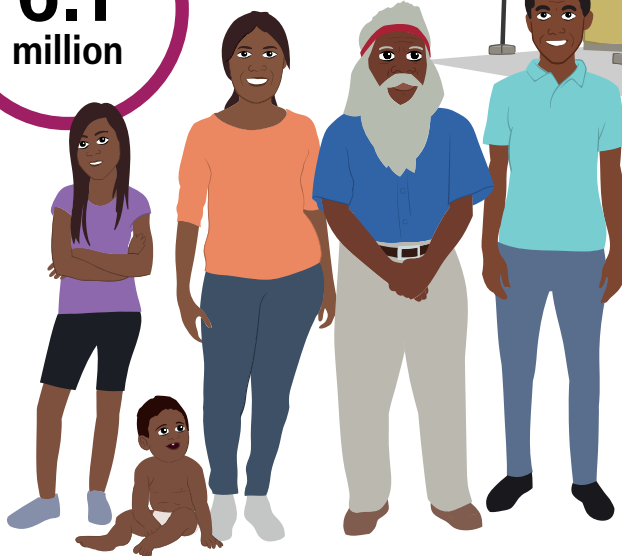
People

**649 168**

Aboriginal and/or  
Torres Strait  
Islander people

## FAMILIES

**6.1**  
million



**9.9**  
million

HOUSES

**11.9 million**  
Females



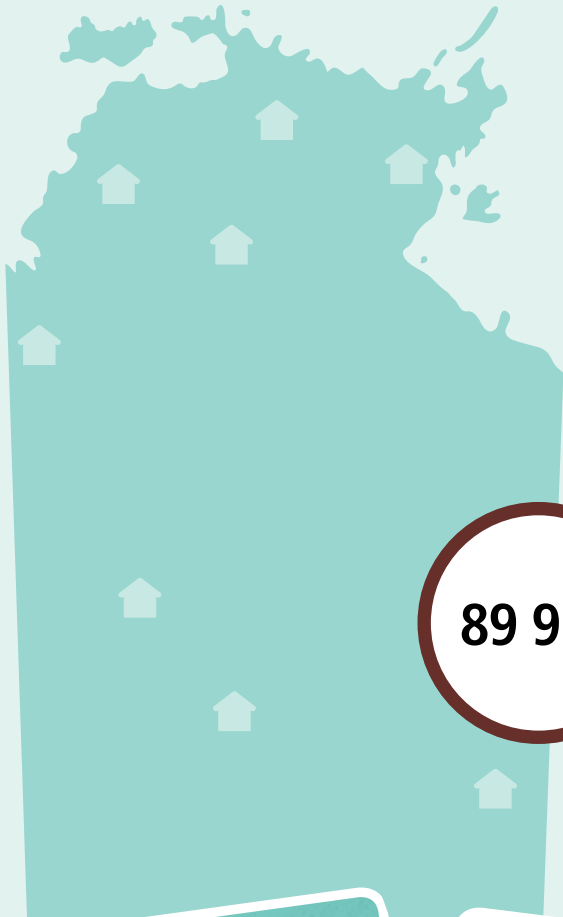
**11.5 million**  
Males



**4.4 million**  
Children



# Northern Territory



228 833

People

58 247

Aboriginal and/or  
Torres Strait  
Islander people

89 959 HOUSES

110 266

FEMALES

118 570

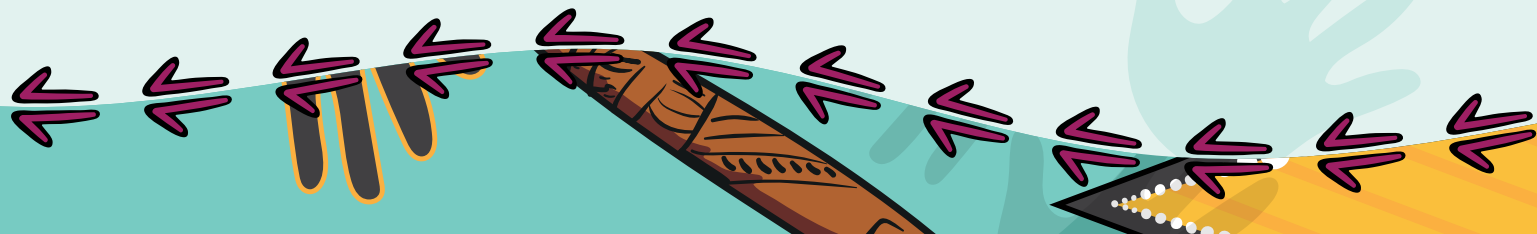
MALES

49 474

(CHILDREN



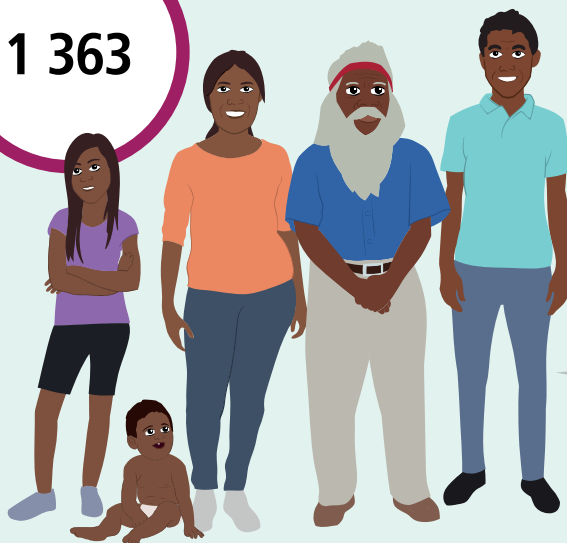
# Barkly Region



# Barkly Region

## FAMILIES

1 363



6 655

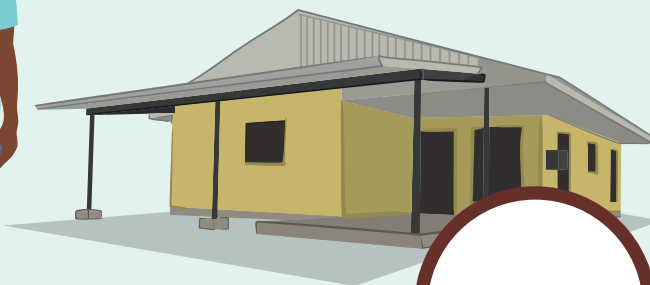
People

4 531

Aboriginal and/or  
Torres Strait  
Islander people

2 846

HOUSES



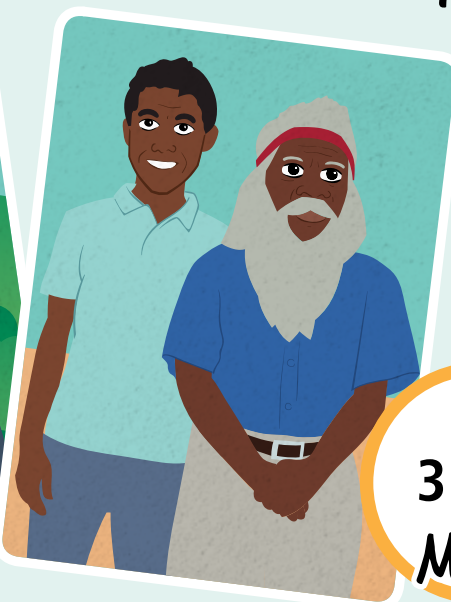
3 231

FEMALES



3 425

MALES



# Ali Curung

LANGUAGE SPOKEN  
Warlpiri

494

People

450

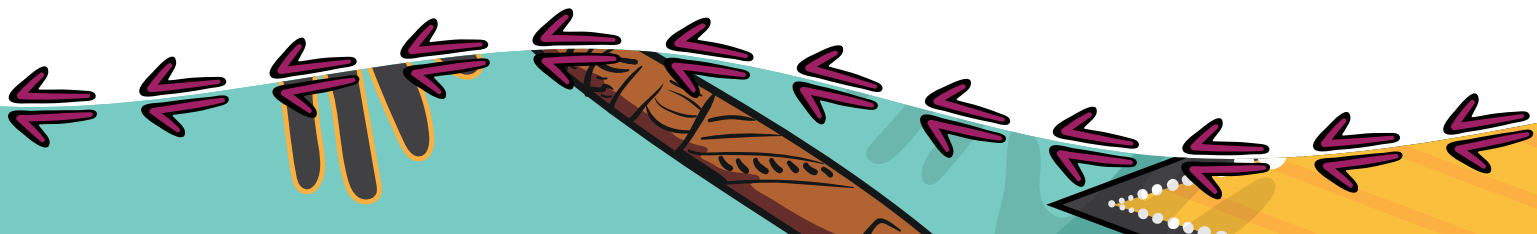
Aboriginal and/or  
Torres Strait  
Islander people

HOUSES

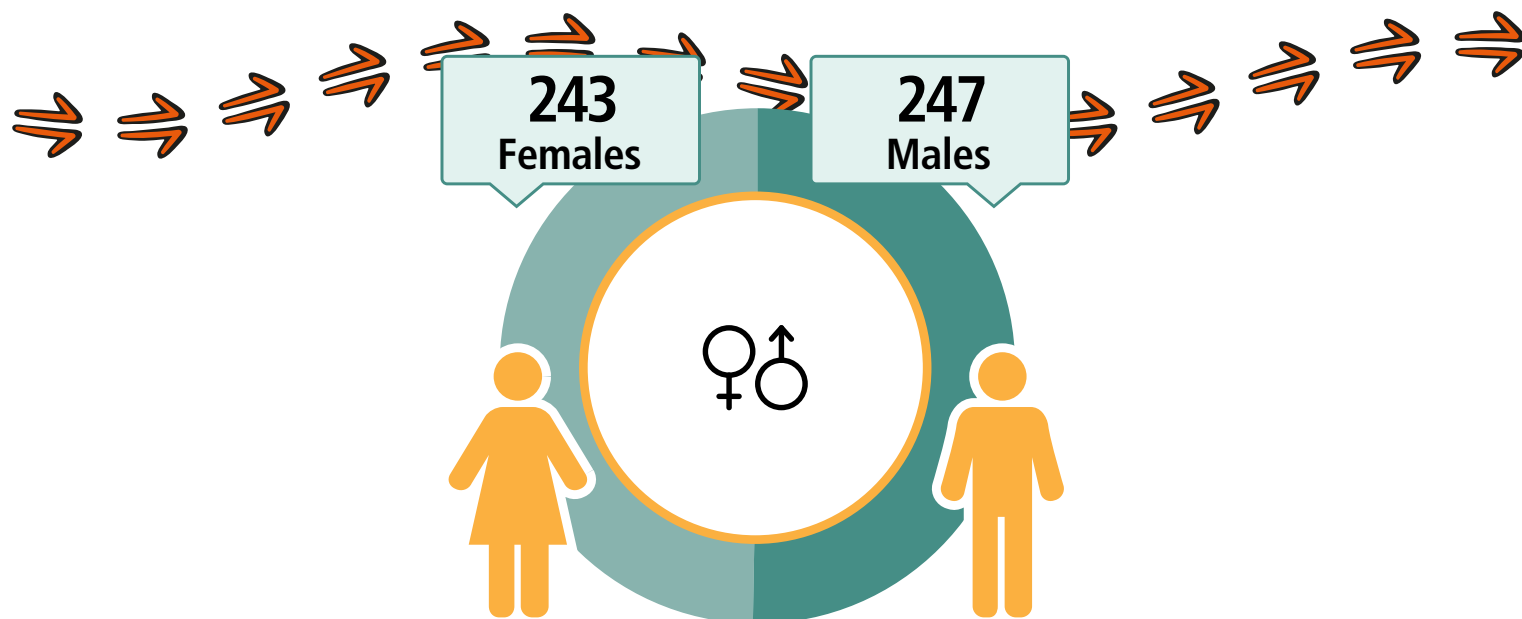
100

100

FAMILIES



# Ali Curung



## CARED FOR CHILDREN



37%

55  
Working



\$257  
Weekly Income



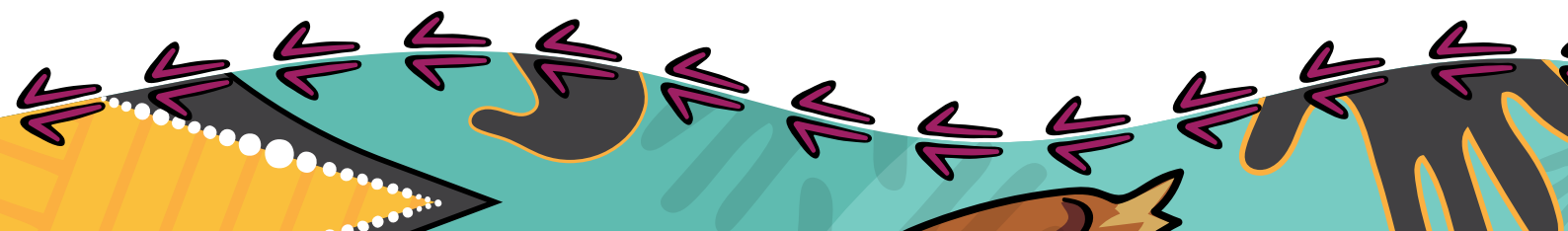
160  
Students



35  
Completed  
Year 12



Geography: Ali Curung ILOC



# Alpururulam

LANGUAGE SPOKEN  
Alyawarr

420

People

391

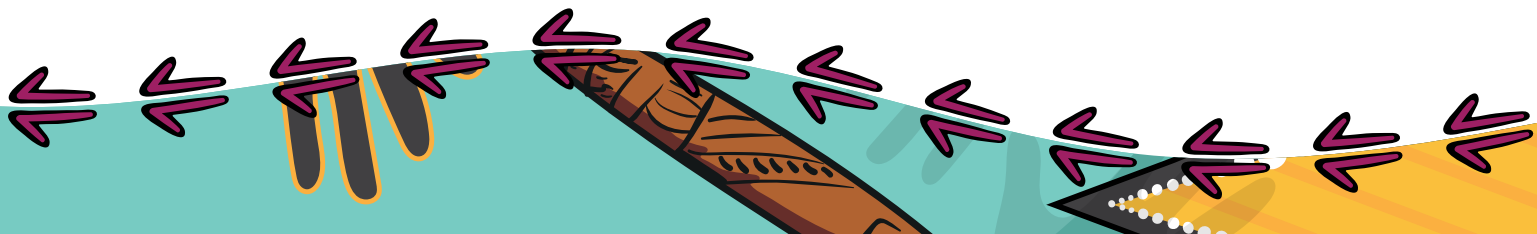
Aboriginal and/or  
Torres Strait  
Islander people

HOUSES

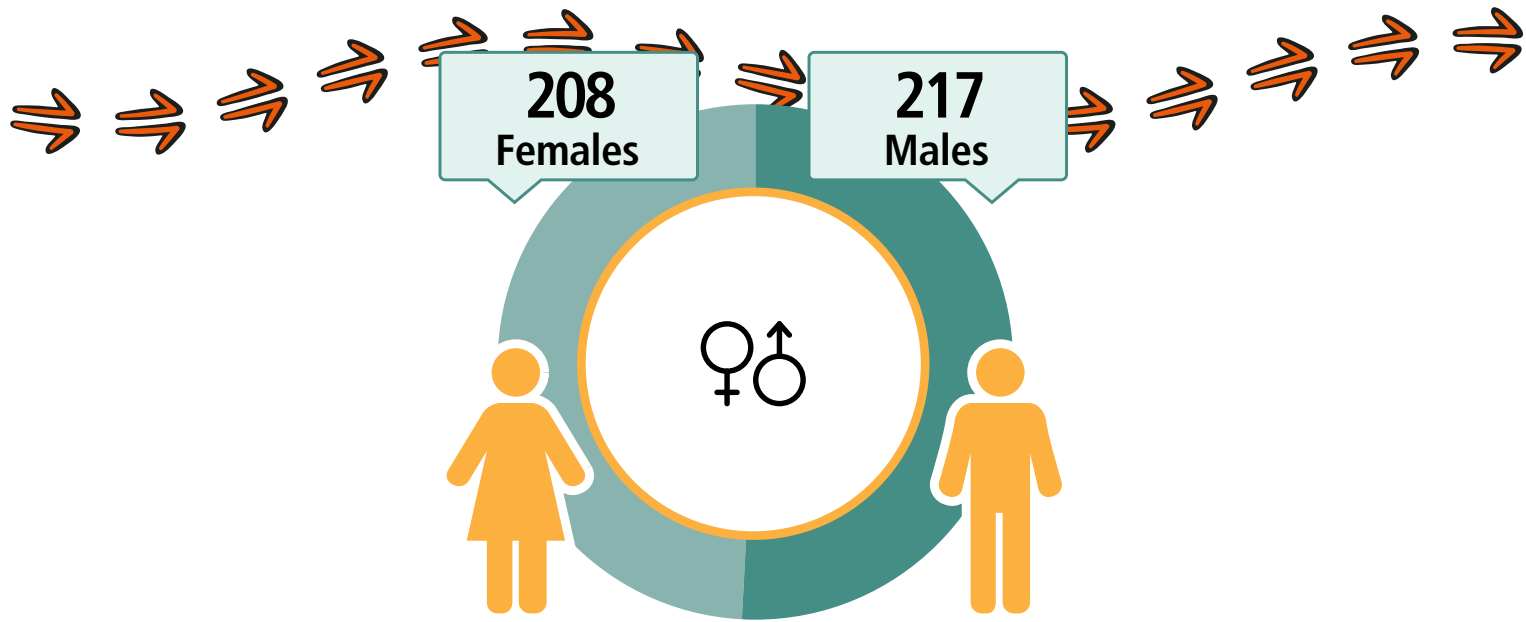
102

101

FAMILIES



# Alpurrrulam



## CARED FOR CHILDREN



43%

73  
Working



\$254  
Weekly Income



121  
Students



29  
Completed  
Year 12



Geography: Alpurrrulam ILOC

# Ampilatwatja

LANGUAGE SPOKEN  
Alyawarr

418

People

382

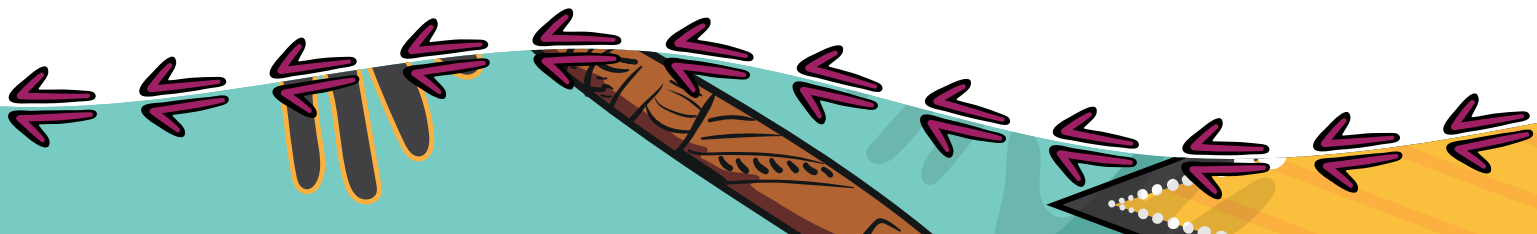
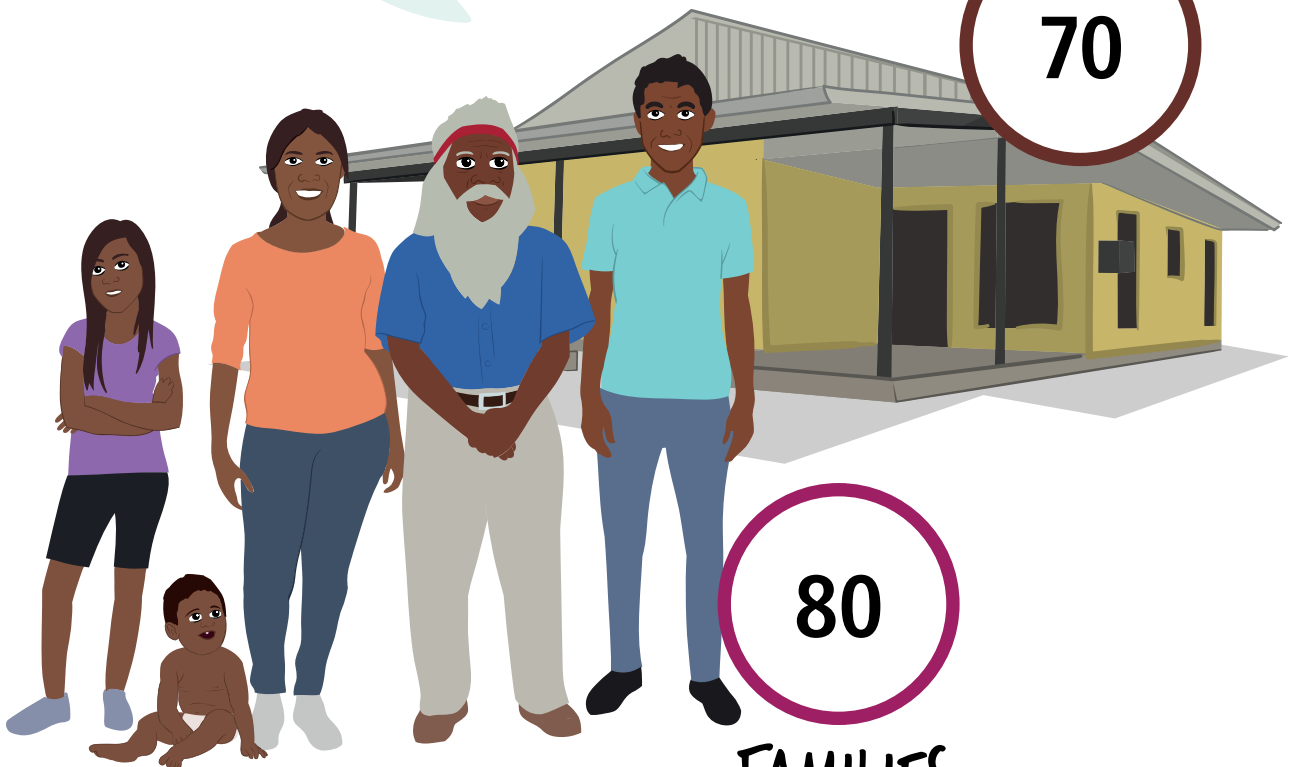
Aboriginal and/or  
Torres Strait  
Islander people

HOUSES

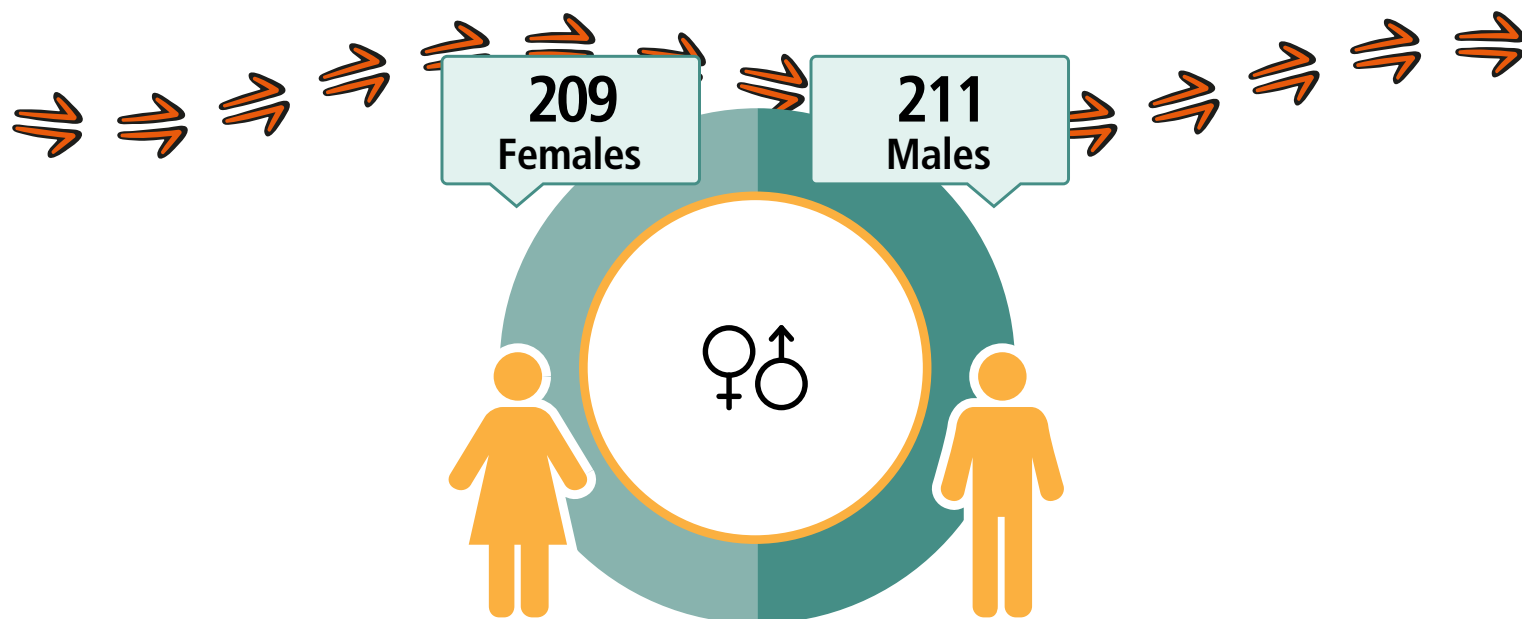
70

80

FAMILIES



# Ampilatwatja



## CARED FOR CHILDREN



82%

36  
Working



\$234  
Weekly Income



148  
Students



33  
Completed  
Year 12



Geography: Ampilatwatja SSC

A decorative border at the bottom of the page featuring stylized Aboriginal art. It includes a yellow and orange pattern on the left, a teal and black pattern in the center, and a black and white pattern on the right, all with various arrows and geometric shapes.

# Atneltyey

LANGUAGE SPOKEN  
Alyawarr

33

People

28

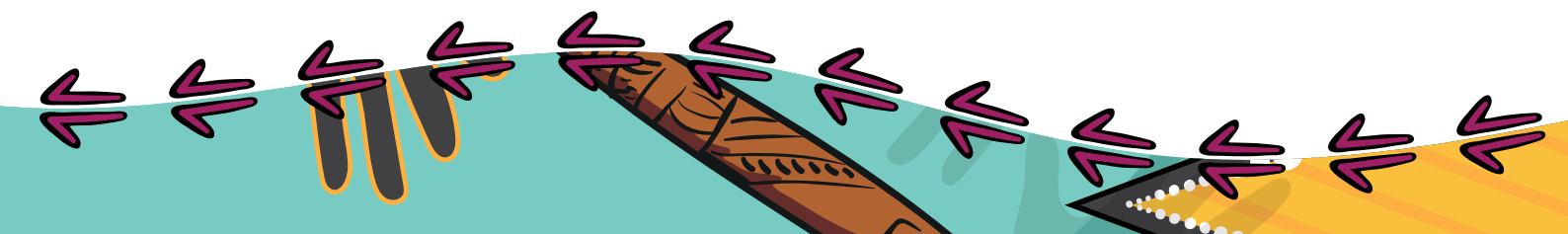
Aboriginal and/or  
Torres Strait  
Islander people

HOUSES

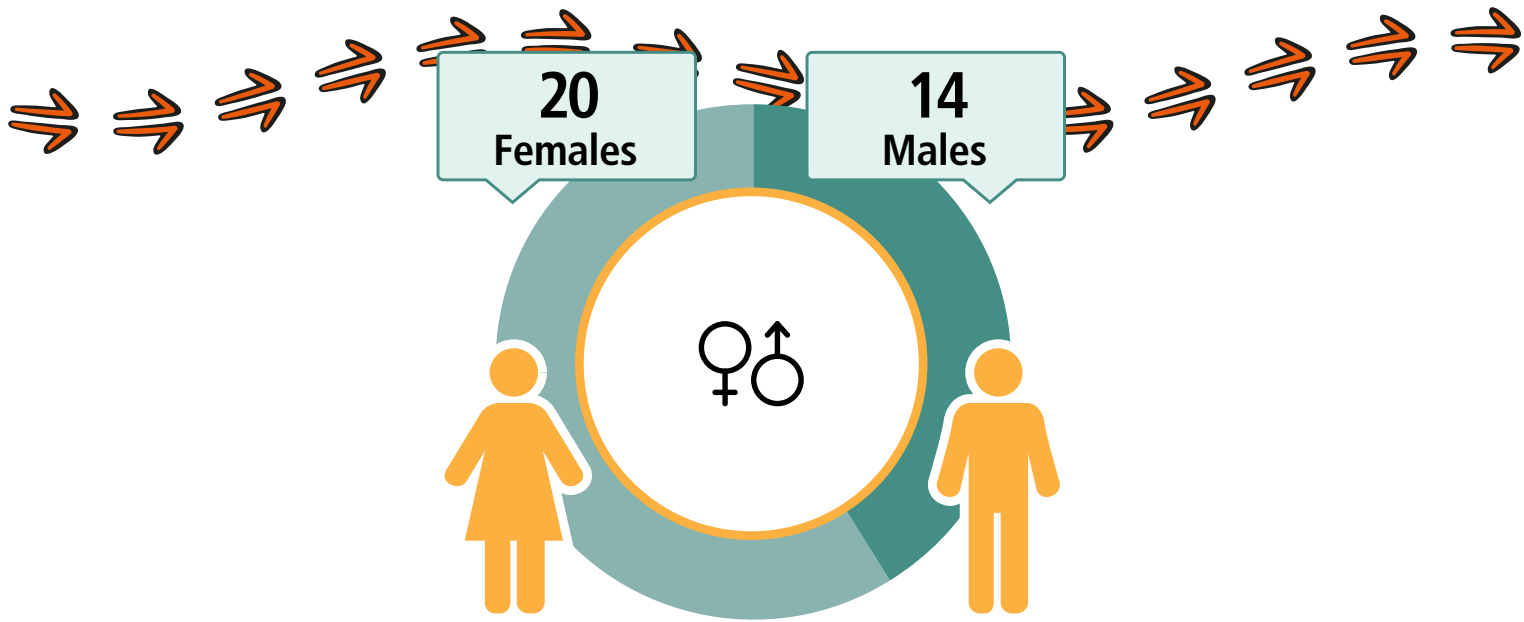
12

6

FAMILIES



# Atneltyey



## CARED FOR CHILDREN



57%

0  
Working



\$225  
Weekly Income



17  
Students



0  
Completed  
Year 12



Geography: Atneltyey ILOC

A decorative border at the bottom of the page featuring a stylized Aboriginal art pattern with various colors and shapes, including a large yellow and black design on the left and a green and black design on the right.

# Canteen Creek

LANGUAGE SPOKEN  
Alyawarr

184

People

176

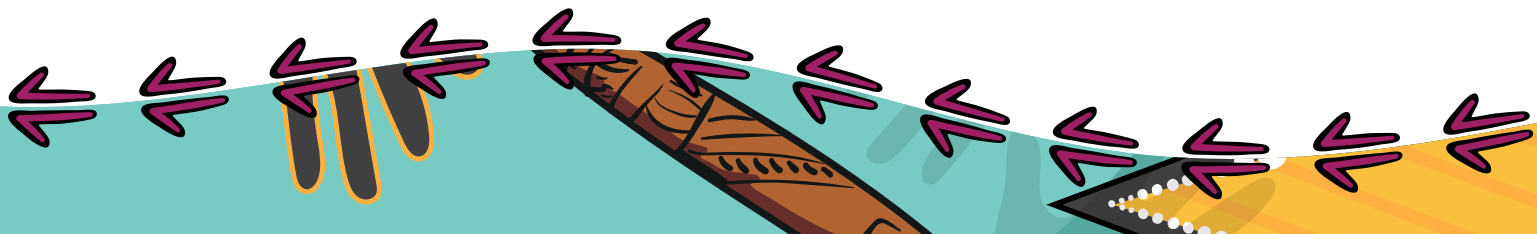
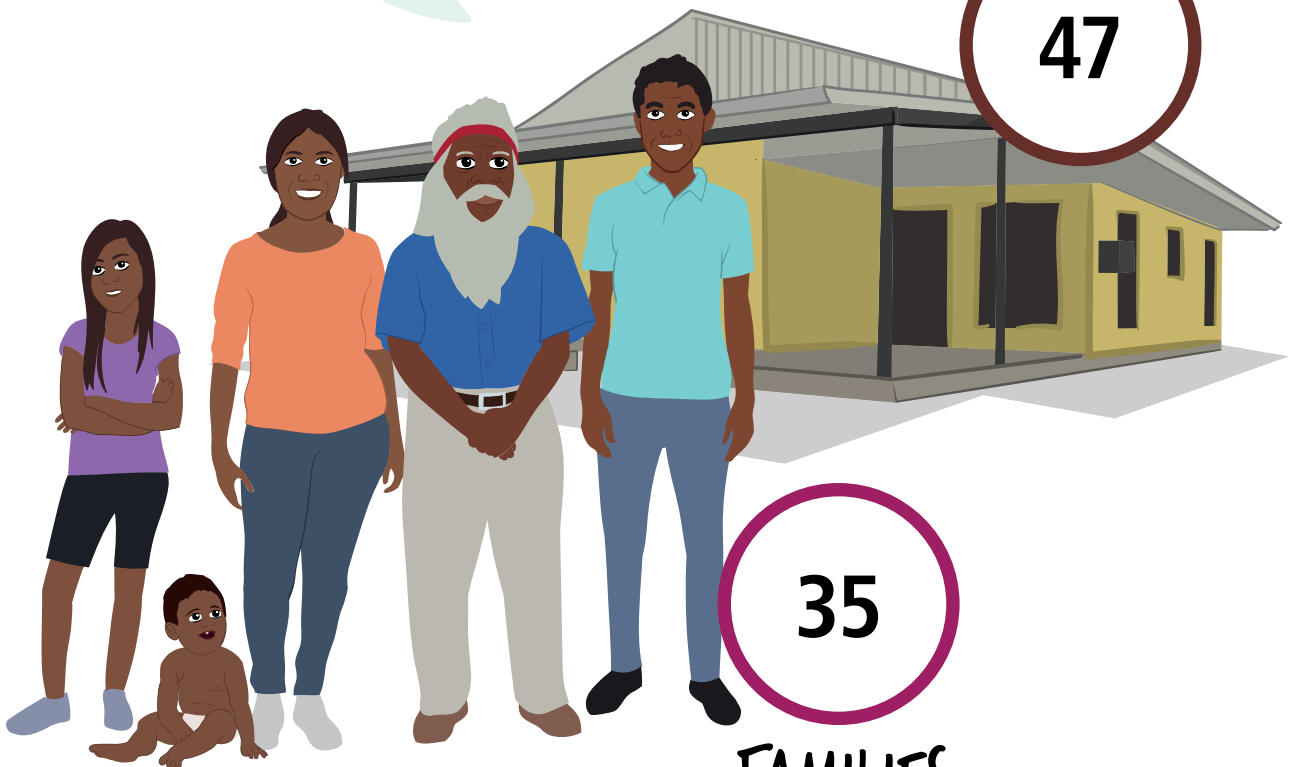
Aboriginal and/or  
Torres Strait  
Islander people

HOUSES

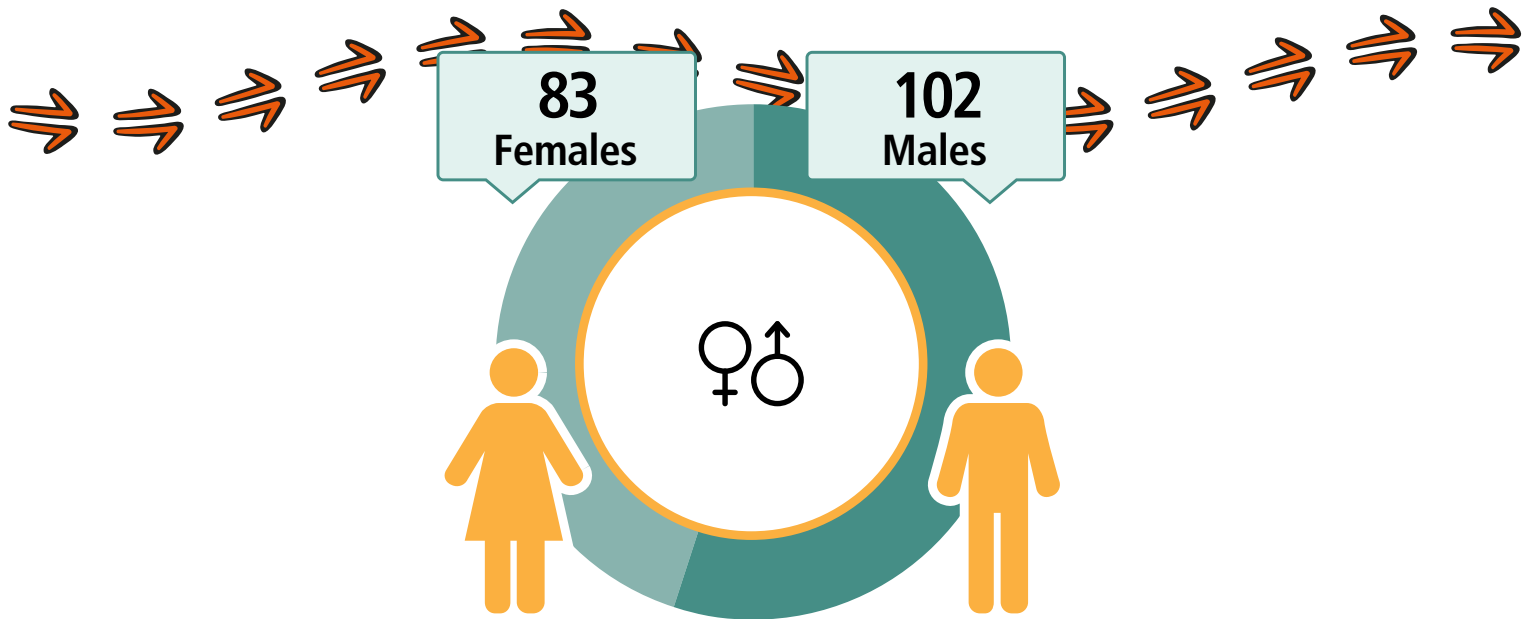
47

35

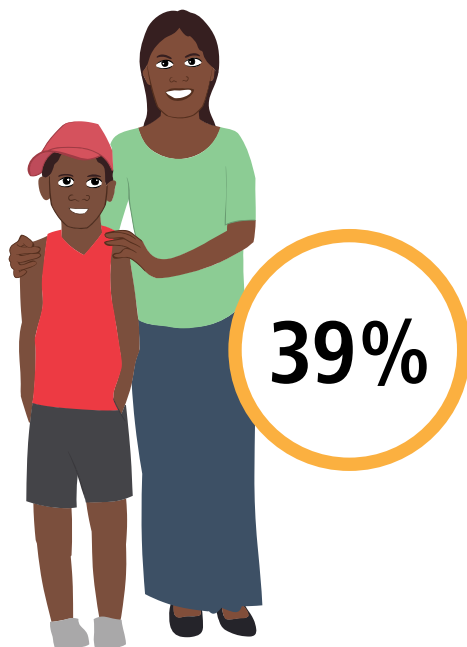
FAMILIES



# Canteen Creek



## CARED FOR (CHILDREN



**27**  
Working



**\$276**  
Weekly Income



**79**  
Students



**7**  
Completed  
Year 12



Geography: Canteen Creek ILOC

# Elliott

LANGUAGE SPOKEN  
Mudburra

339

People

302

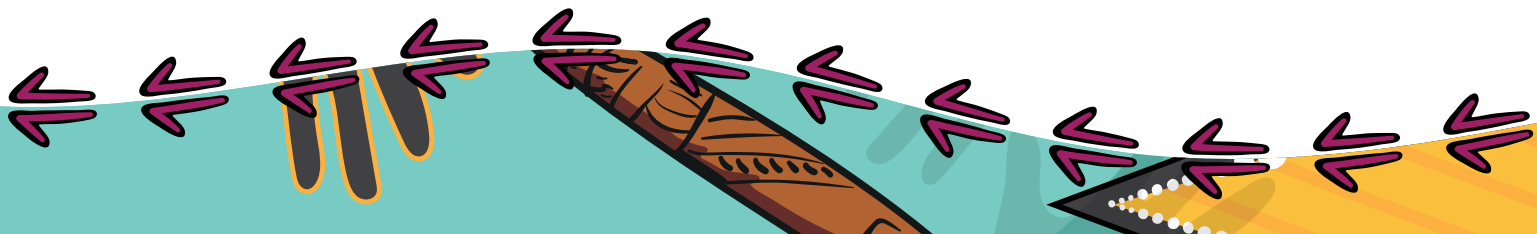
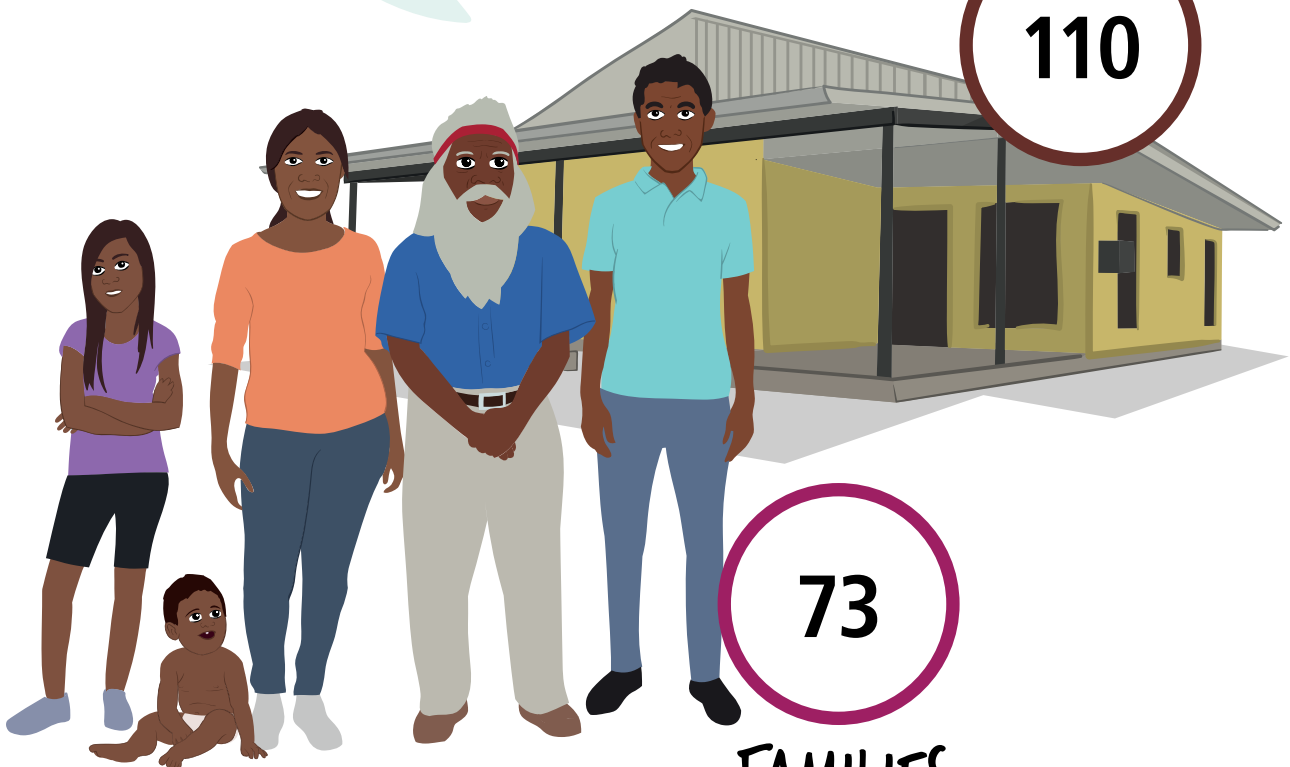
Aboriginal and/or  
Torres Strait  
Islander people

HOUSES

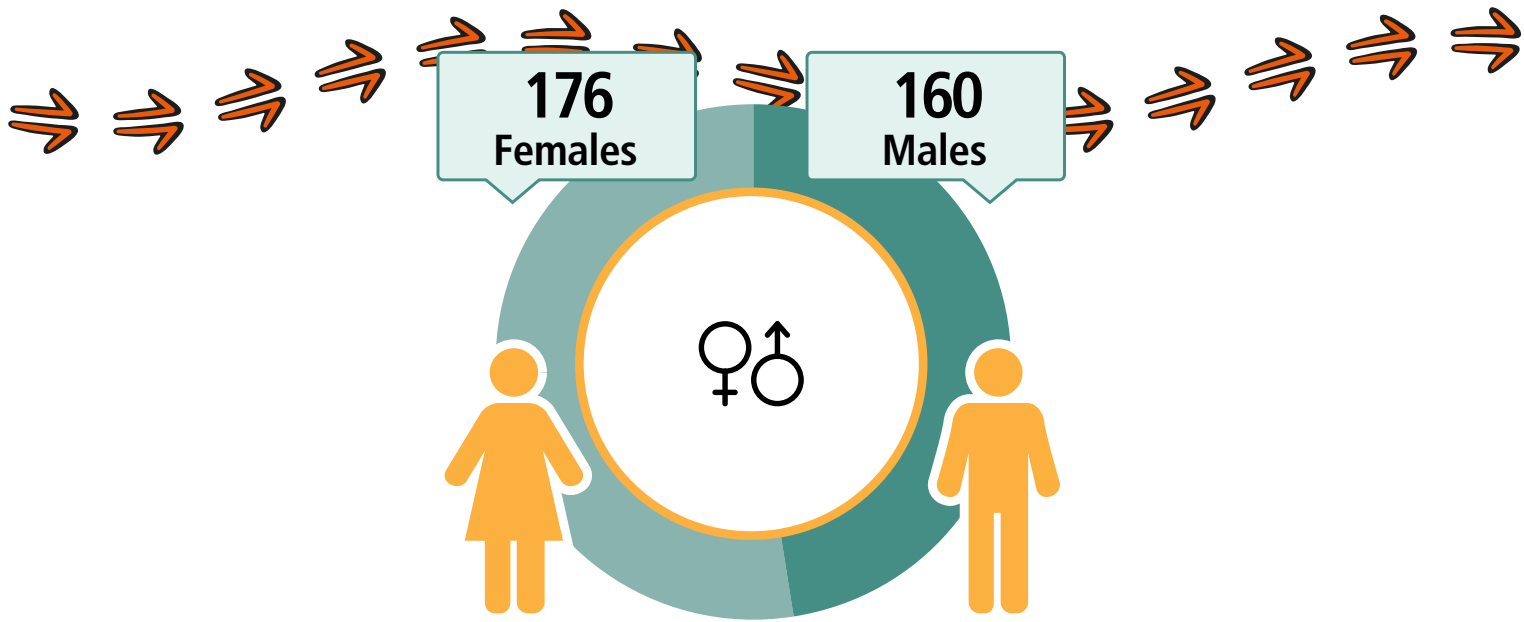
110

73

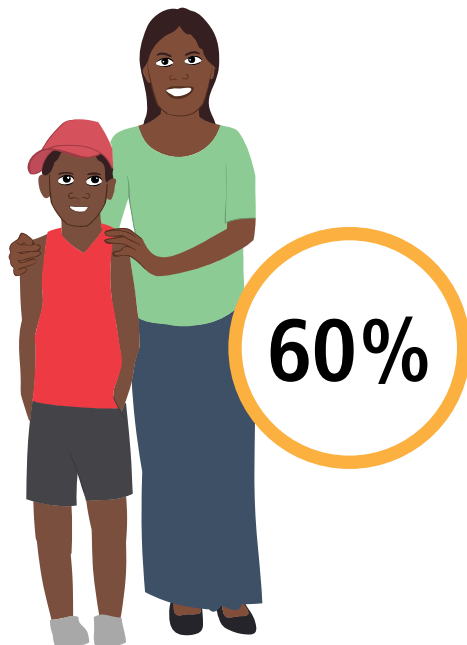
FAMILIES



# Elliott



## CARED FOR (CHILDREN



**80**  
Working



**\$465**  
Weekly Income



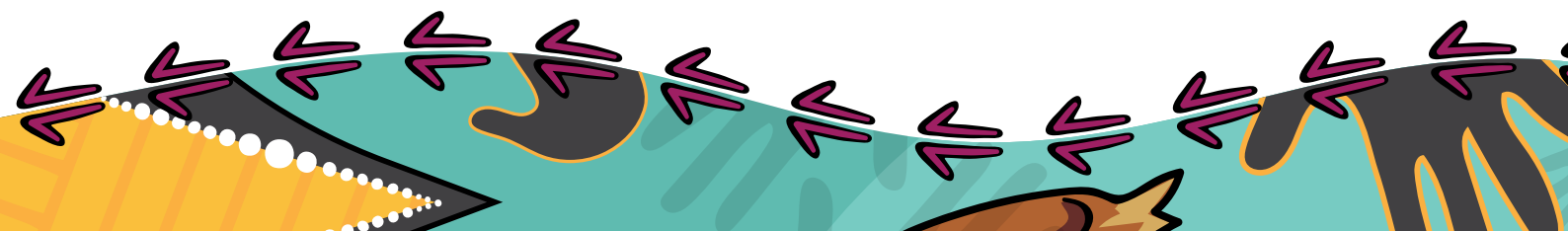
**117**  
Students



**33**  
Completed  
Year 12



Geography: Elliott ILOC



# Imangara

LANGUAGE SPOKEN  
Alyawarr

69

People

62

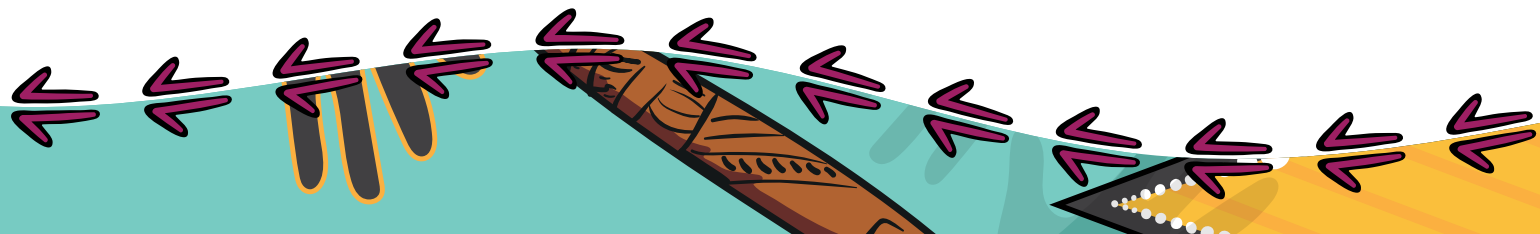
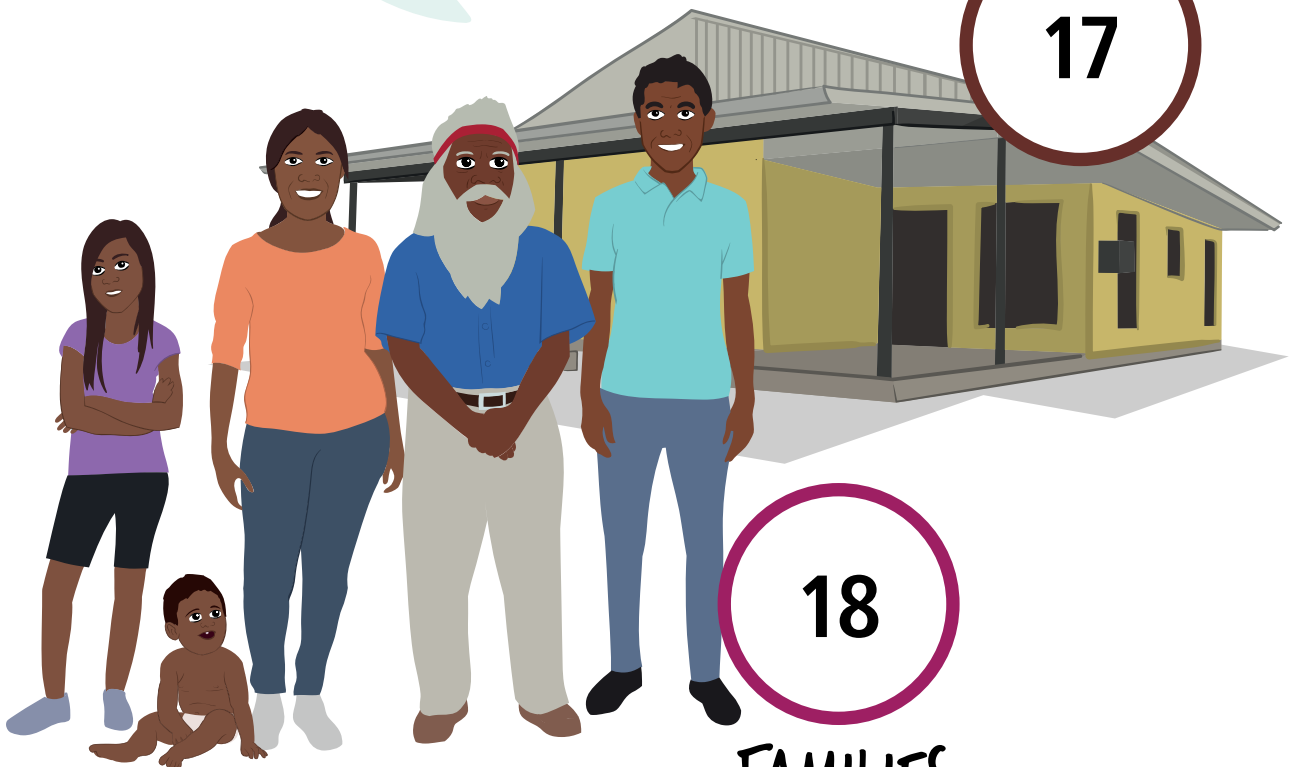
Aboriginal and/or  
Torres Strait  
Islander people

HOUSES

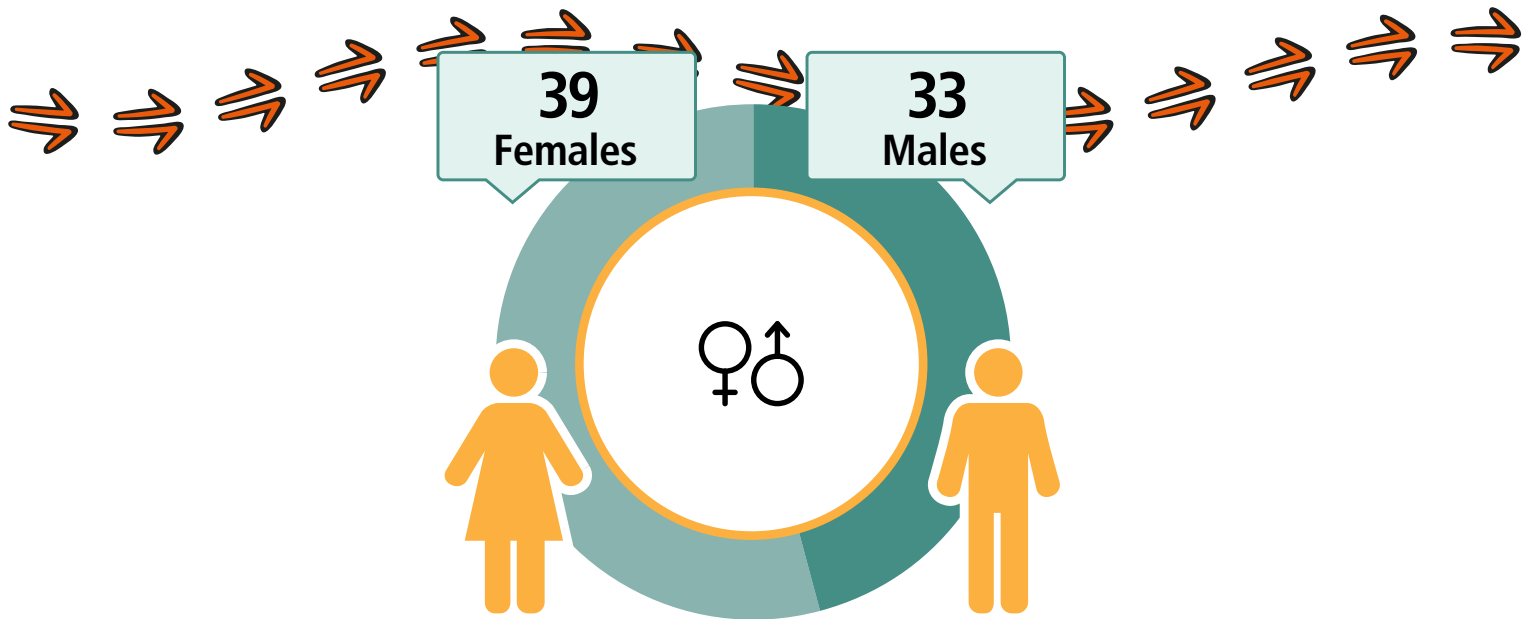
17

18

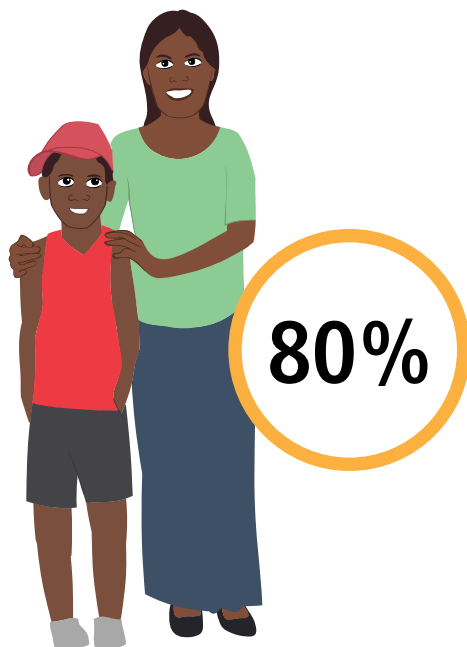
FAMILIES



# Imangara



## CARED FOR CHILDREN



**16**  
Working



**\$292**  
Weekly Income



**30**  
Students



**3**  
Completed  
Year 12



Geography: Imangara ILOC

A decorative border at the bottom of the page featuring a stylized Aboriginal art pattern. It includes a yellow and orange geometric design on the left, transitioning into a teal and black pattern with white dots and purple arrows pointing in various directions.

# Irrultja

LANGUAGE SPOKEN  
Alyawarr

66

People

66

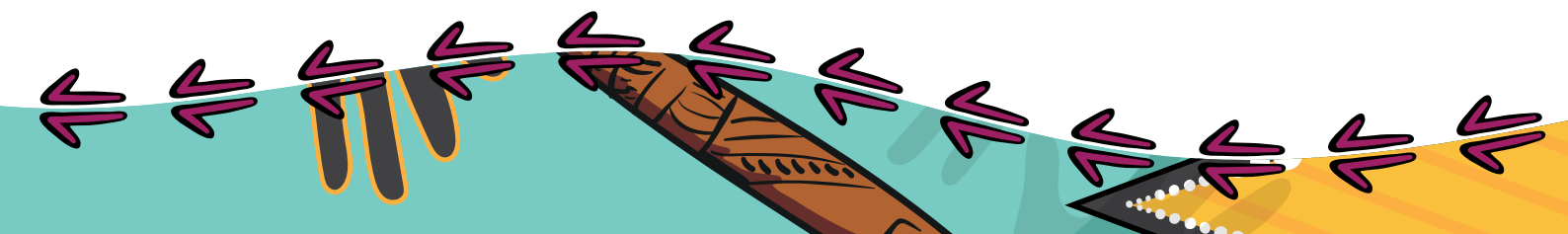
Aboriginal and/or  
Torres Strait  
Islander people

HOUSES

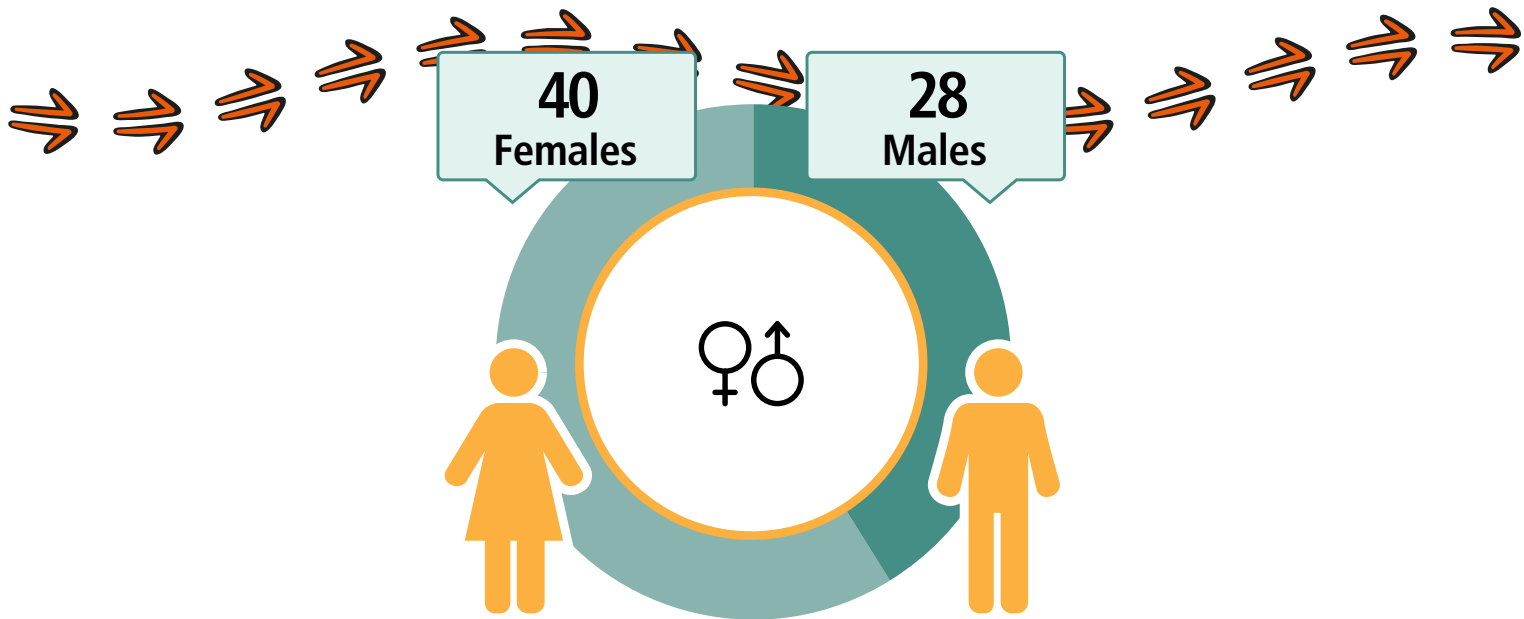
11

10

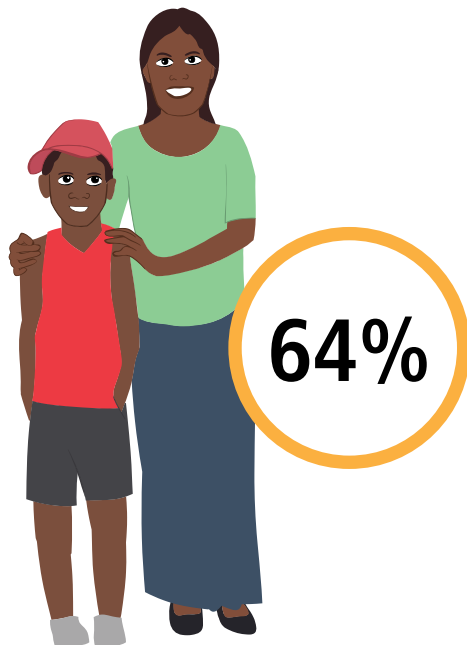
FAMILIES



# Irrultja



## CARED FOR CHILDREN



**3**  
Working



**\$156**  
Weekly Income



**36**  
Students



**10**  
Completed  
Year 12



Geography: Irrultja ILOC

# Kargaru

LANGUAGE SPOKEN  
Warumungu

107

People

101

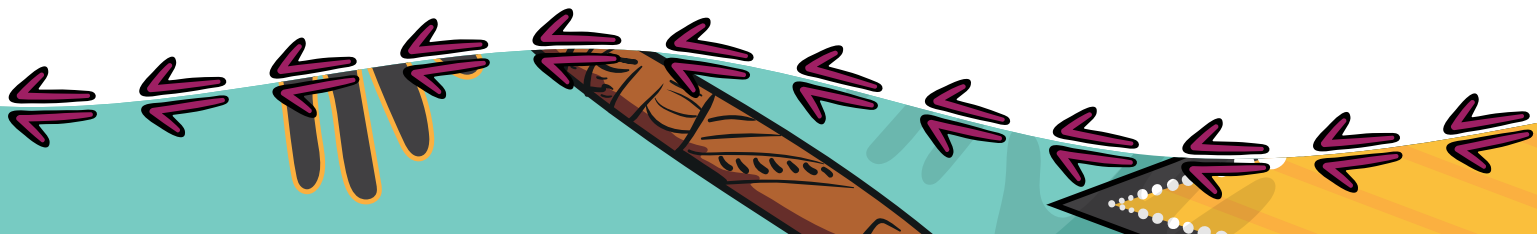
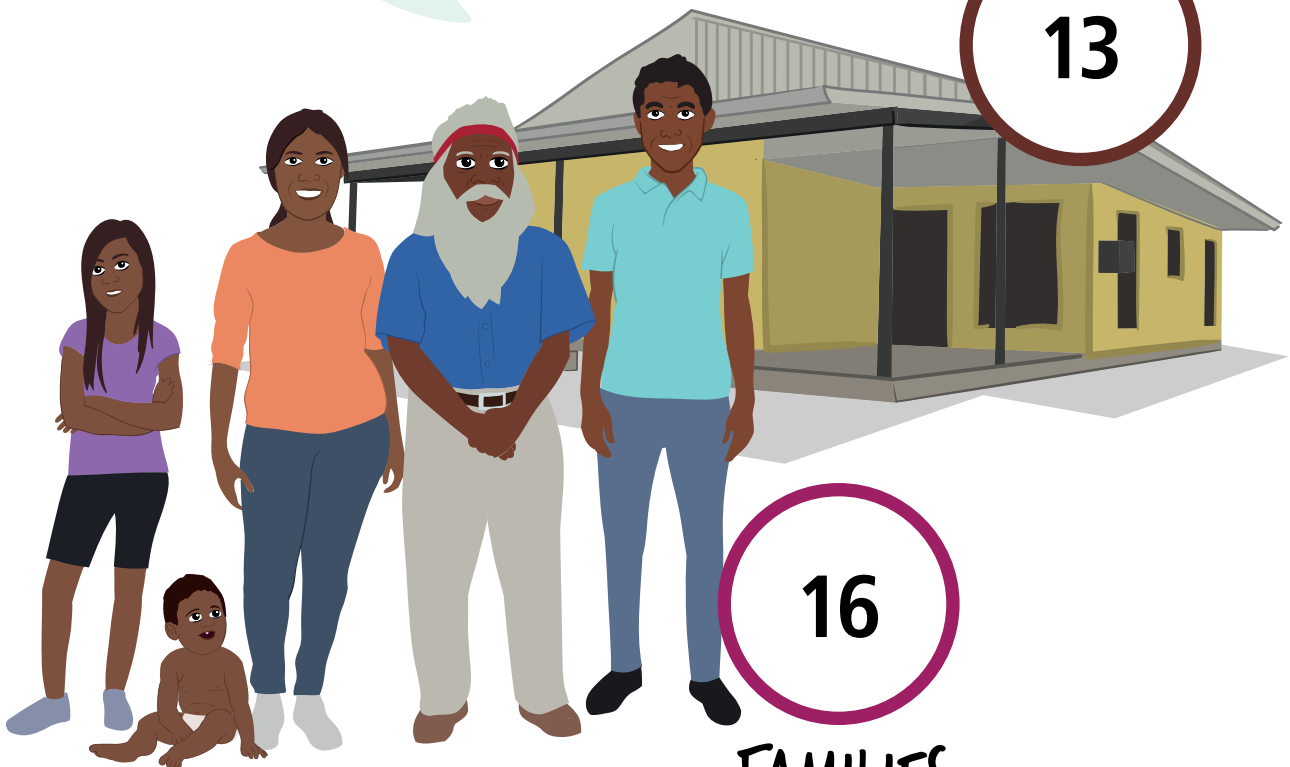
Aboriginal and/or  
Torres Strait  
Islander people

HOUSES

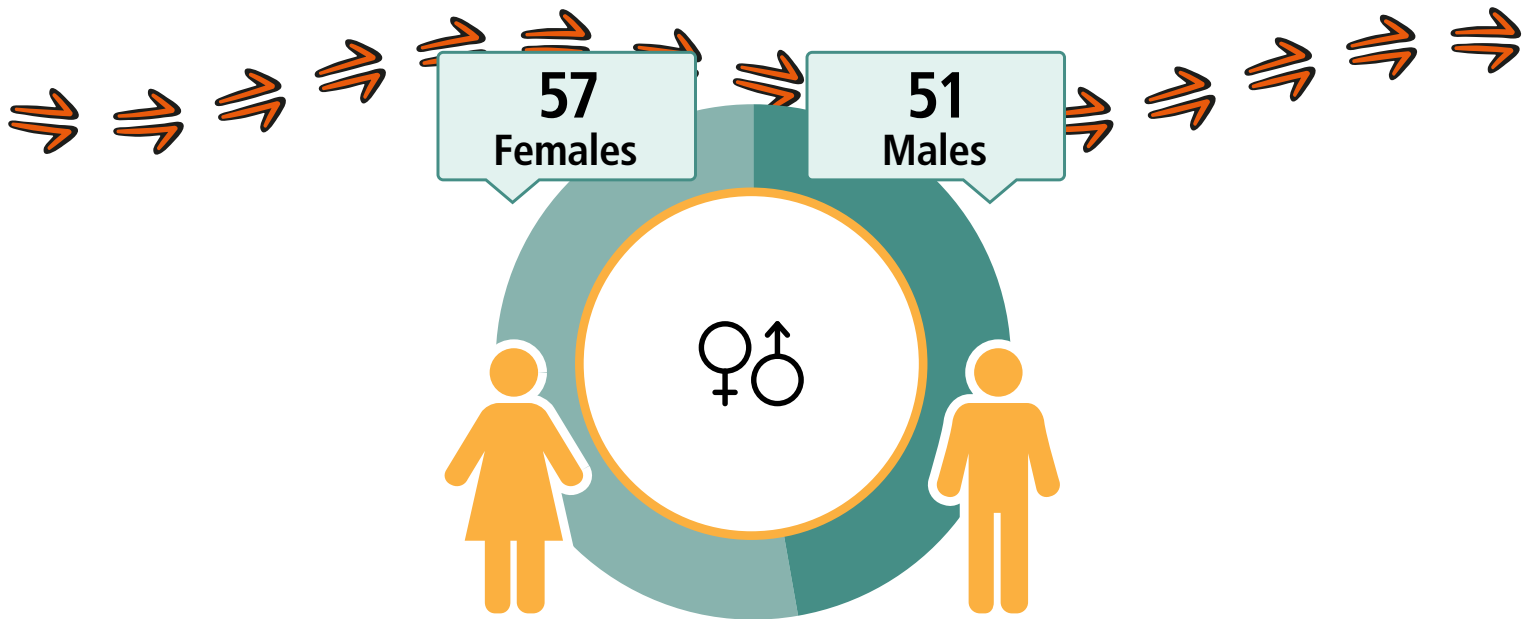
13

16

FAMILIES



# Kargaru



## CARED FOR CHILDREN



45%

0  
Working



\$232  
Weekly Income



24  
Students



14  
Completed  
Year 12



Geography: Kargaru ILOC

# Marla Marla - Village Camp

LANGUAGE SPOKEN  
Warumungu

140

People

138

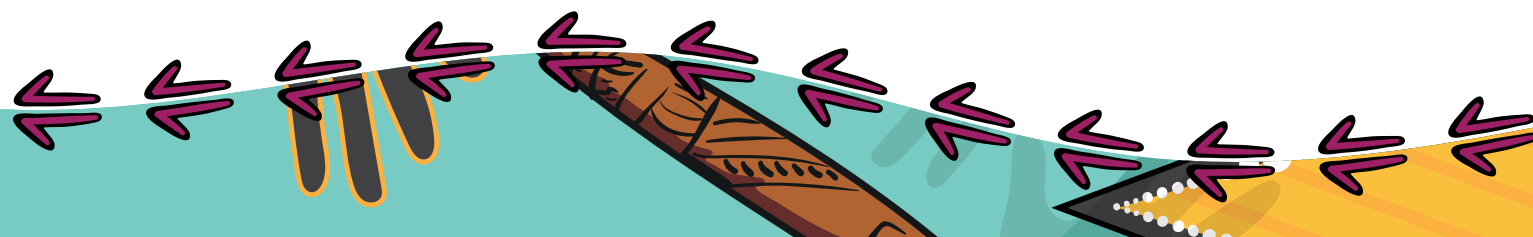
Aboriginal and/or  
Torres Strait  
Islander people

HOUSES

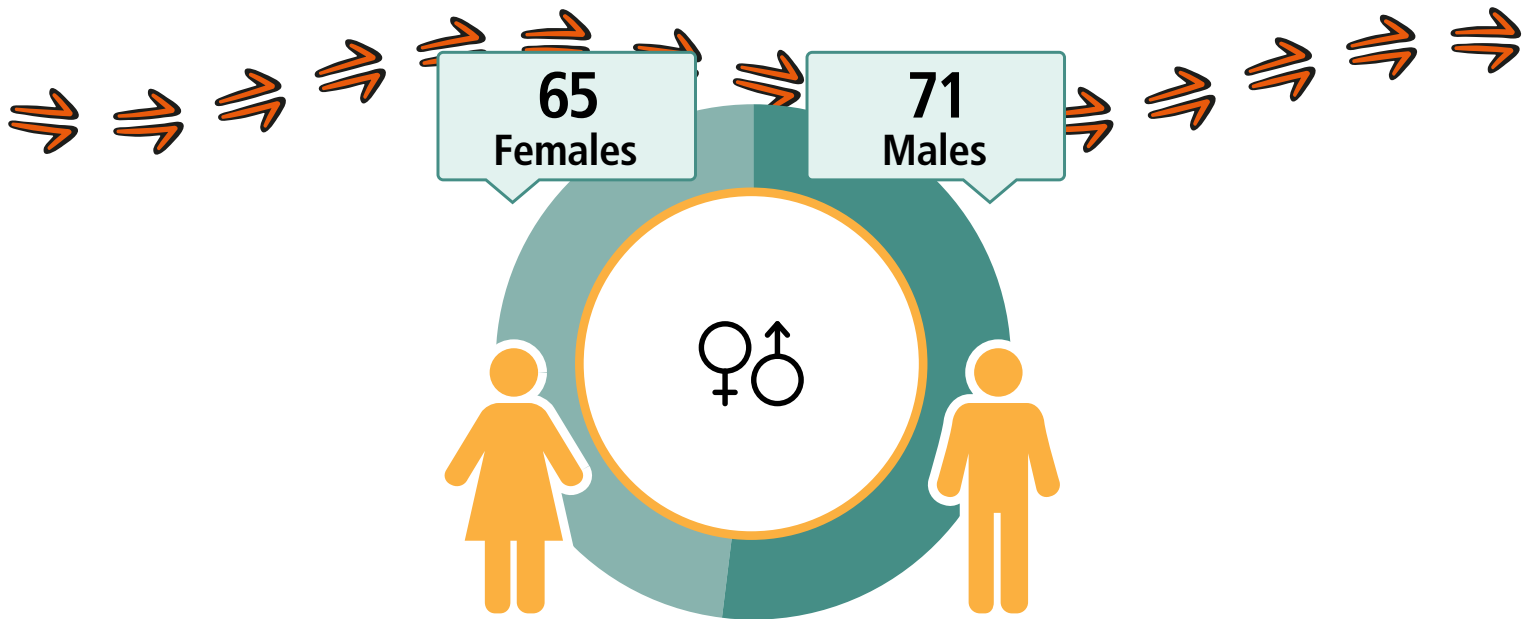
21

25

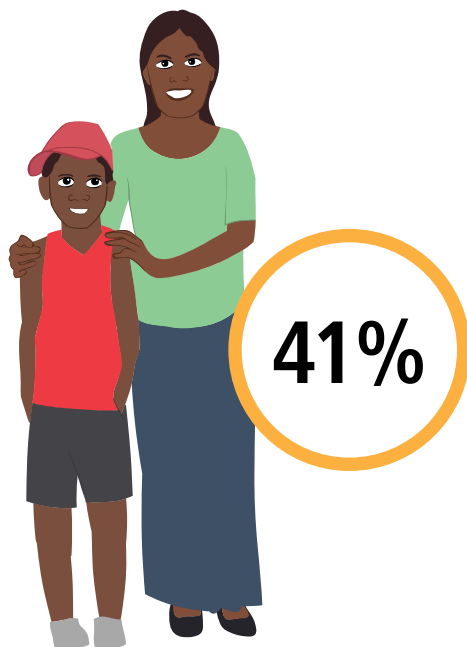
FAMILIES



# Marla Marla - Village Camp



## CARED FOR CHILDREN



**14**  
Working



**\$253**  
Weekly Income



**26**  
Students



**10**  
Completed  
Year 12



Geography: Marla Marla - Village Camp ILOC

# Newcastle Waters

LANGUAGE SPOKEN  
Mudburra

64

People

44

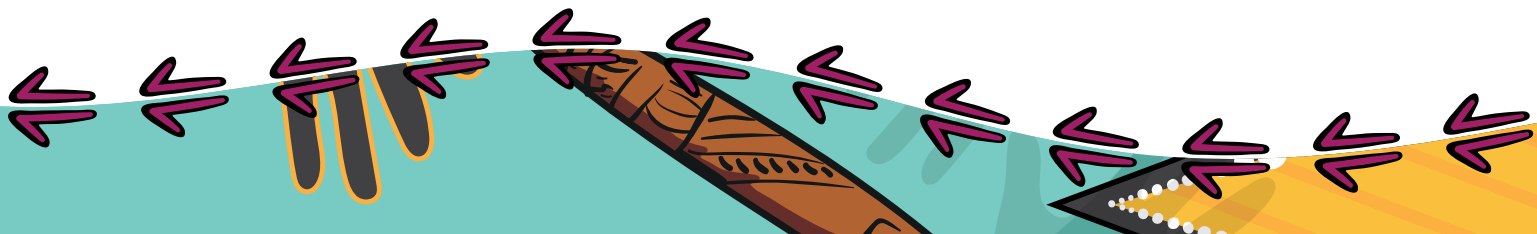
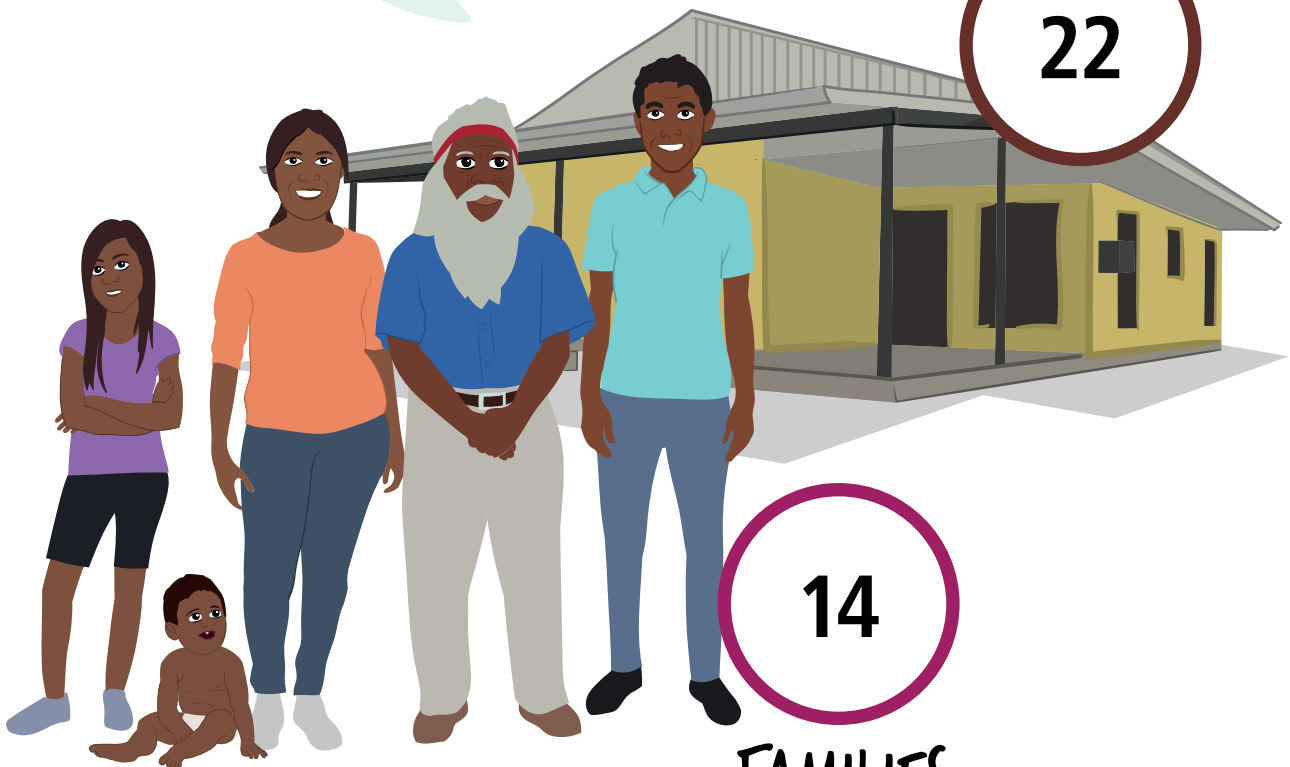
Aboriginal and/or  
Torres Strait  
Islander people

HOUSES

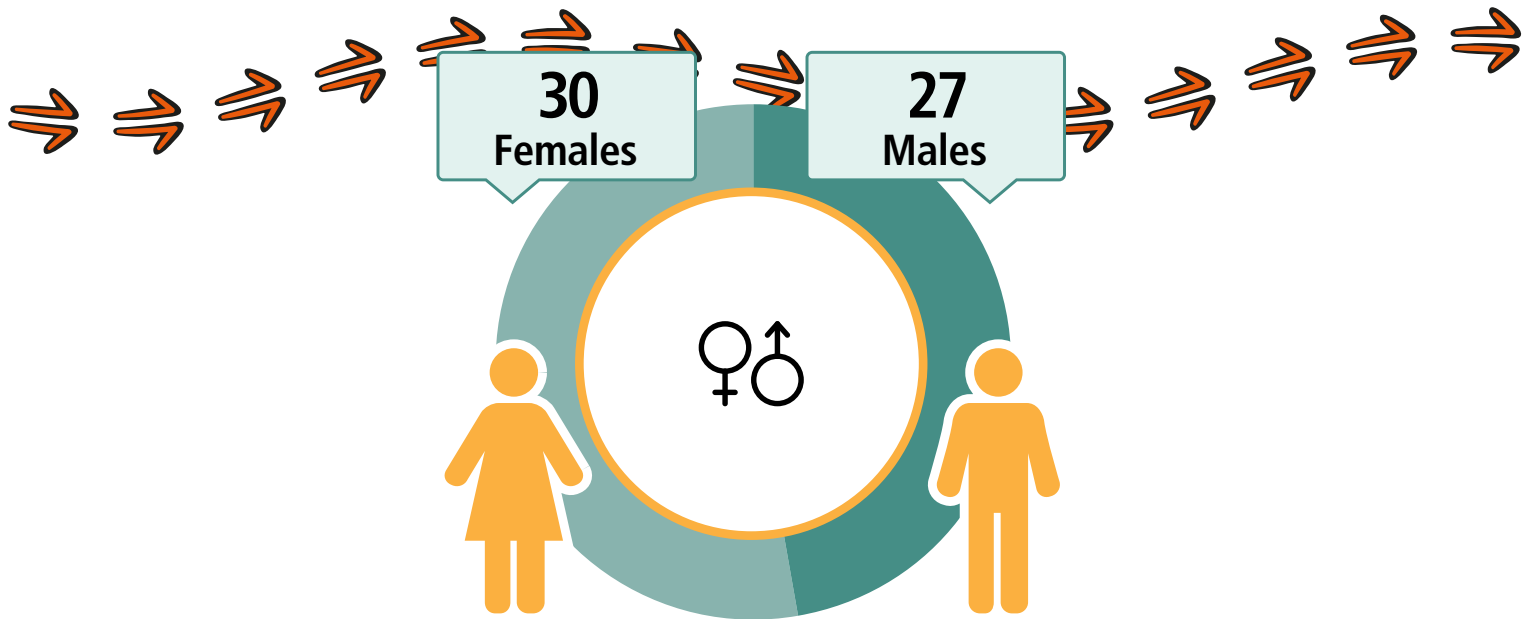
22

14

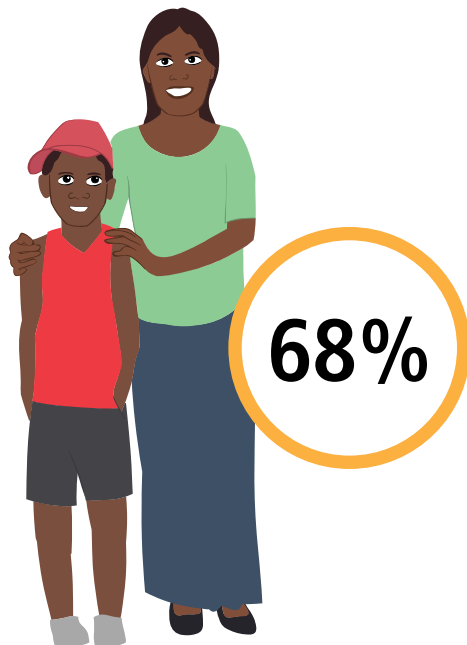
FAMILIES



# Newcastle Waters



## CARED FOR (CHILDREN



**19**  
Working



**\$442**  
Weekly Income



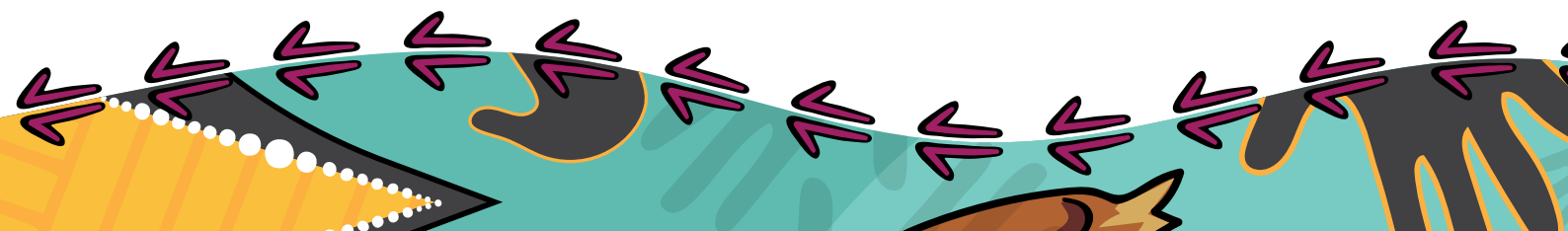
**17**  
Students



**14**  
Completed  
Year 12



Geography: Newcastle Waters SSC



# Ngalpa Ngalpa - Wuppa

LANGUAGE SPOKEN  
Warumungu

283

People

283

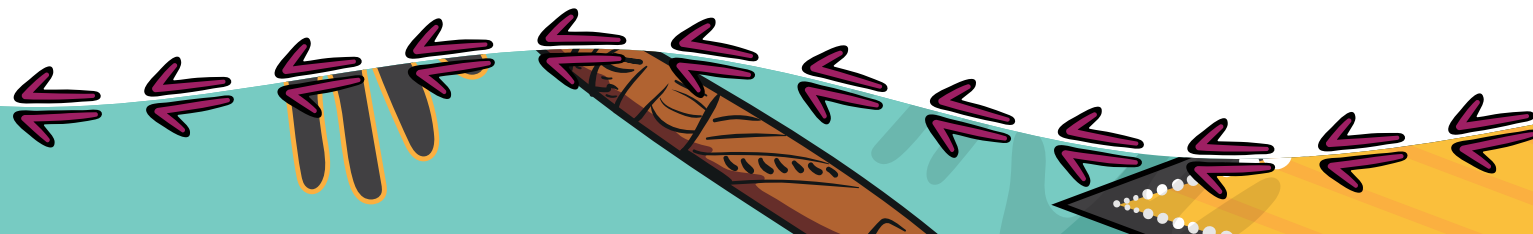
Aboriginal and/or  
Torres Strait  
Islander people

HOUSES

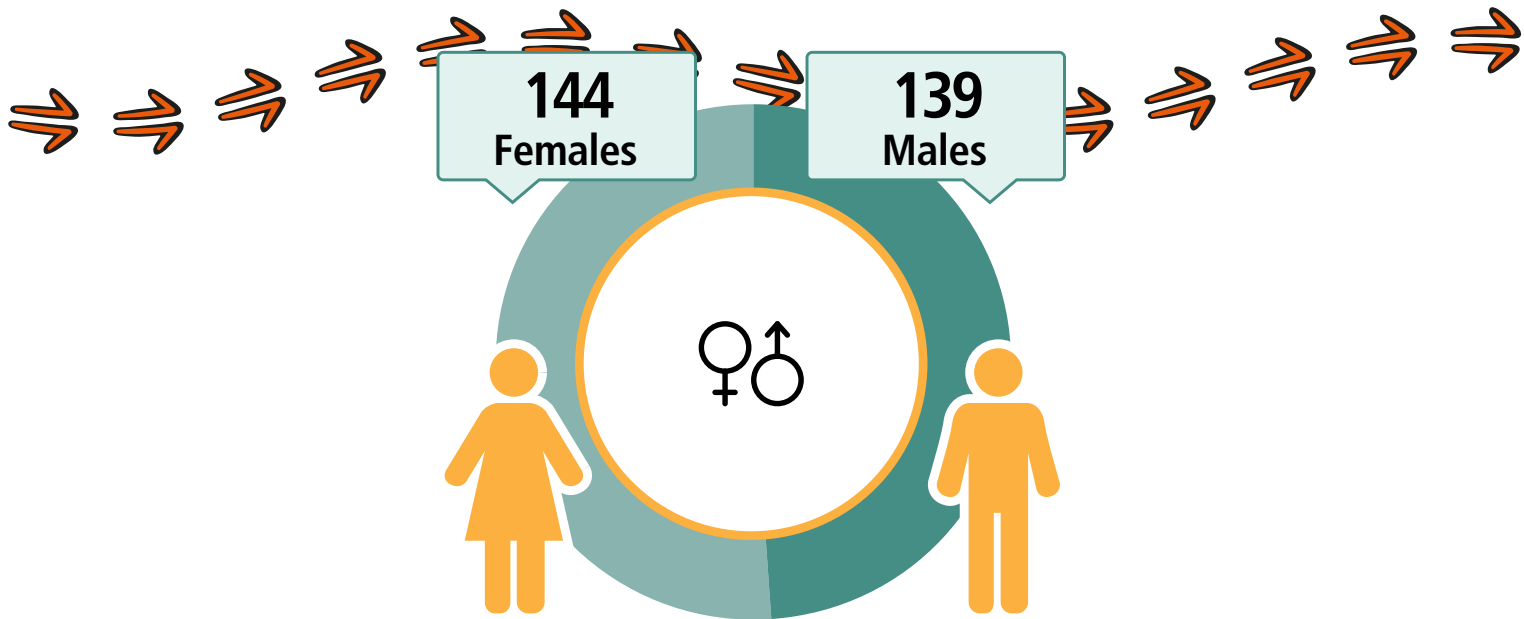
47

60

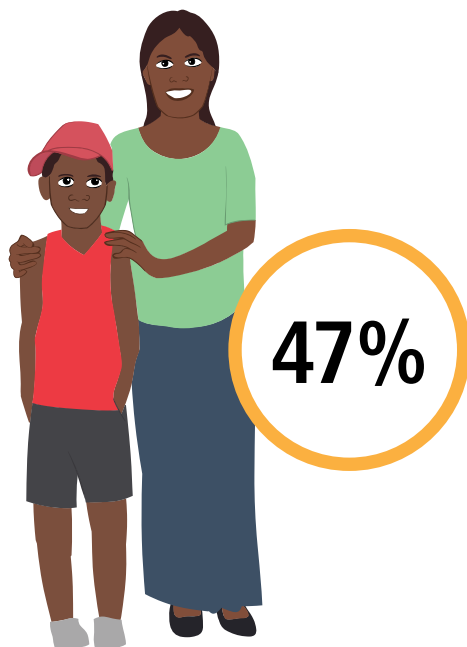
FAMILIES



# Ngalpa Ngalpa - Wuppa



## CARED FOR CHILDREN



**31**  
Working



**\$251**  
Weekly Income



**91**  
Students



**26**  
Completed  
Year 12



Geography: Ngalpa Ngalpa - Wuppa ILOC

# Tara

LANGUAGE SPOKEN  
Kaytetye

89

People

89

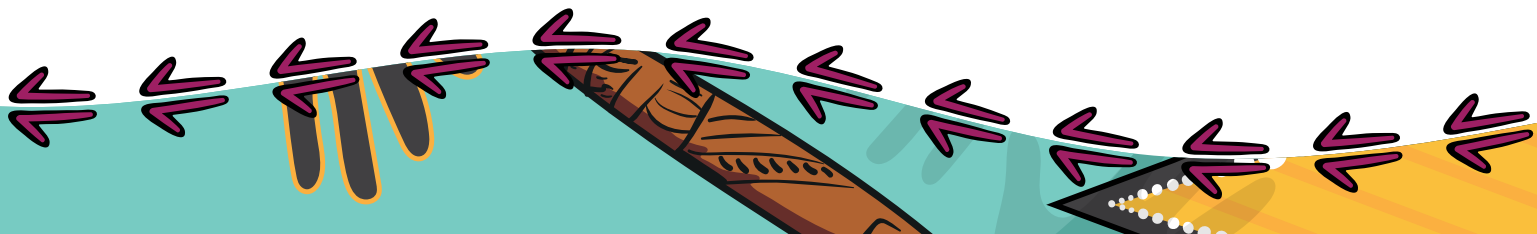
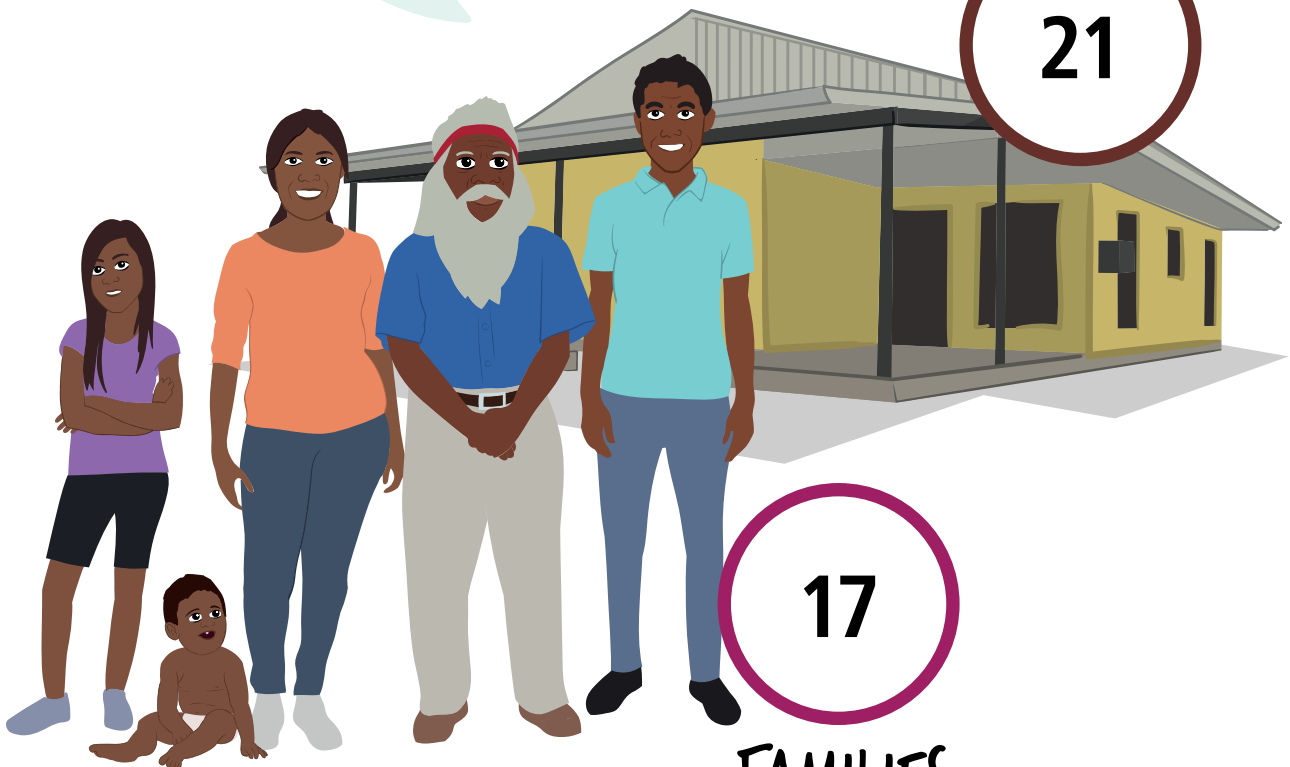
Aboriginal and/or  
Torres Strait  
Islander people

HOUSES

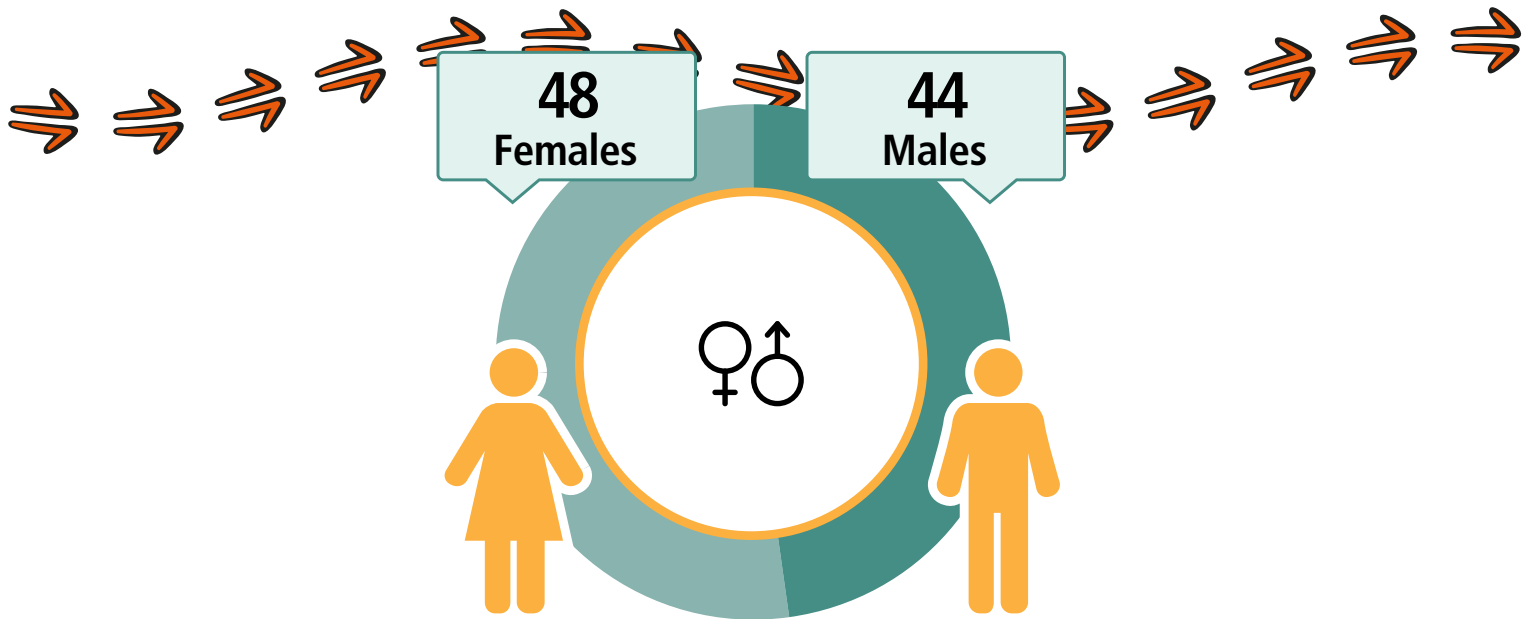
21

17

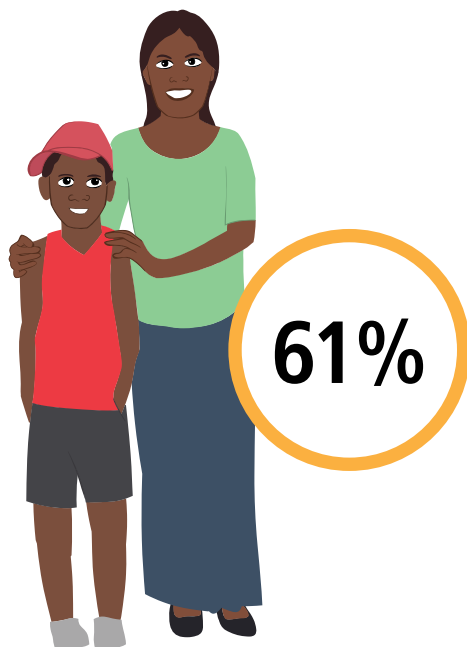
FAMILIES



# Tara



## CARED FOR CHILDREN



**0**  
Working



**\$220**  
Weekly Income



**46**  
Students



**8**  
Completed  
Year 12



Geography: Tara ILOC

# Tennant Creek exc. Town Camps

LANGUAGE SPOKEN  
Warumungu

2 465

People

1 015

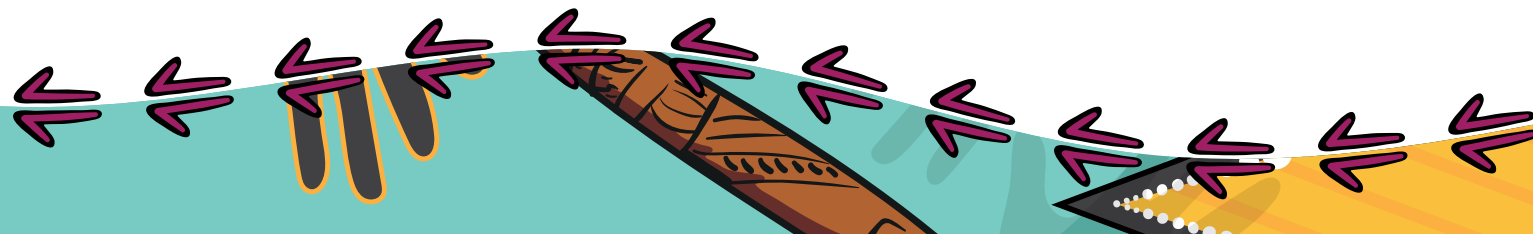
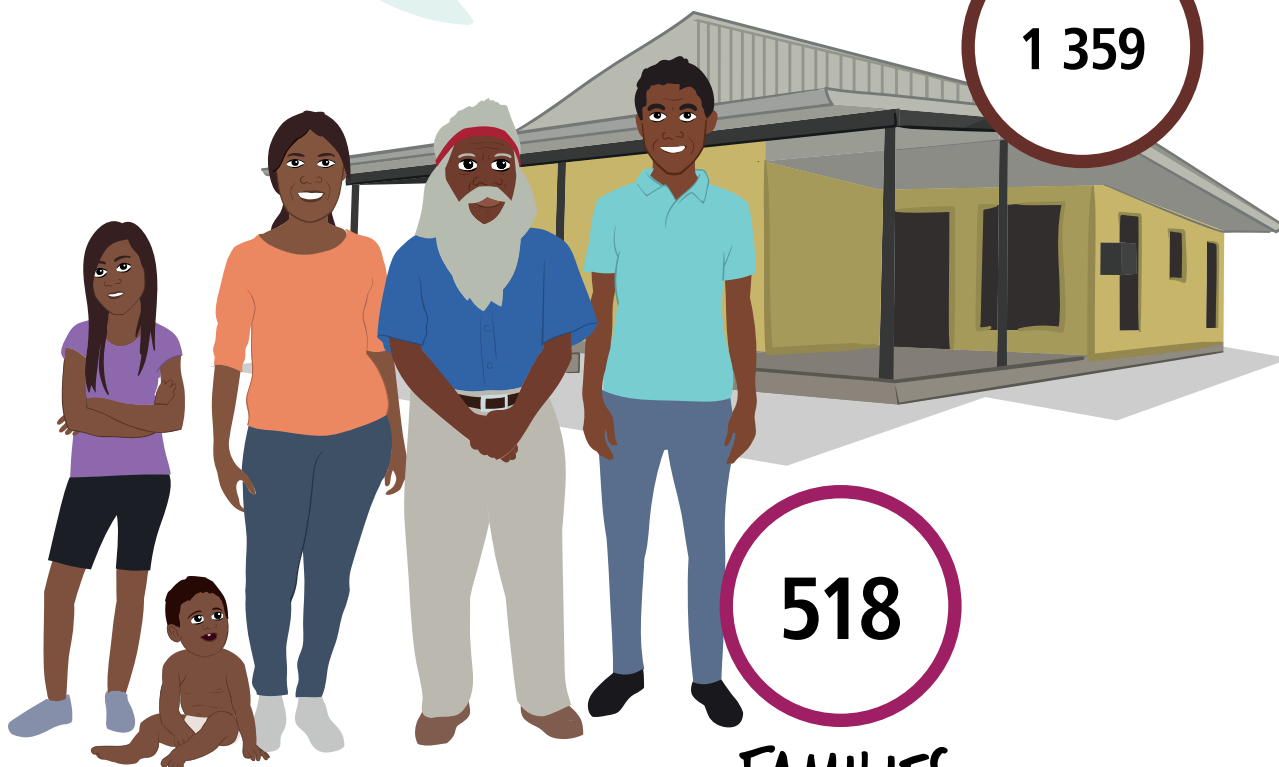
Aboriginal and/or  
Torres Strait  
Islander people

HOUSES

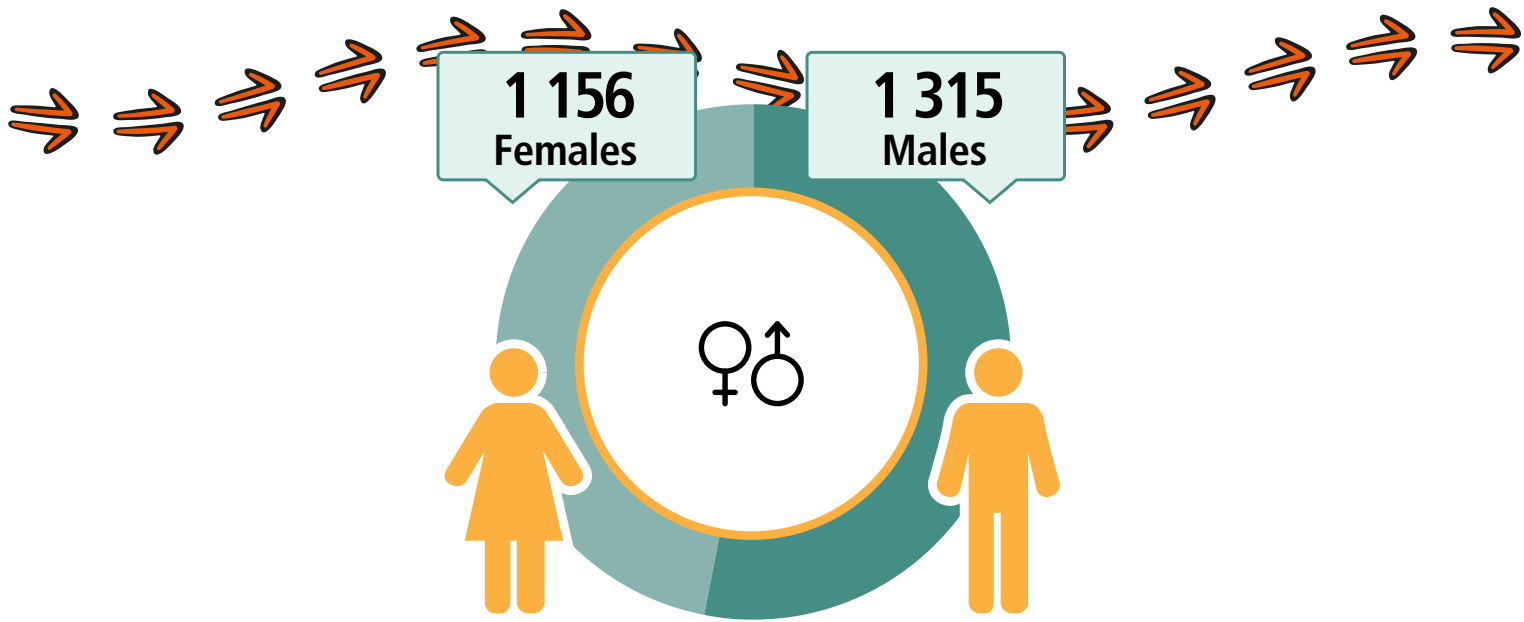
1 359

518

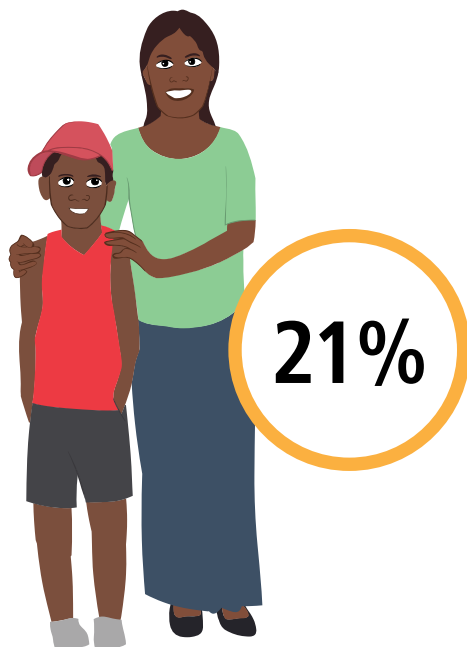
FAMILIES



# Tennant Creek exc. Town Camps



## CARED FOR CHILDREN



**1 109**  
Working



**\$853**  
Weekly Income



**859**  
Students



**678**  
Completed  
Year 12



Geography: Tennant Creek exc. Town Camps ILOC

# Utopia - Arawerr - Arlparra

LANGUAGE SPOKEN  
Alyawarr

452

People

400

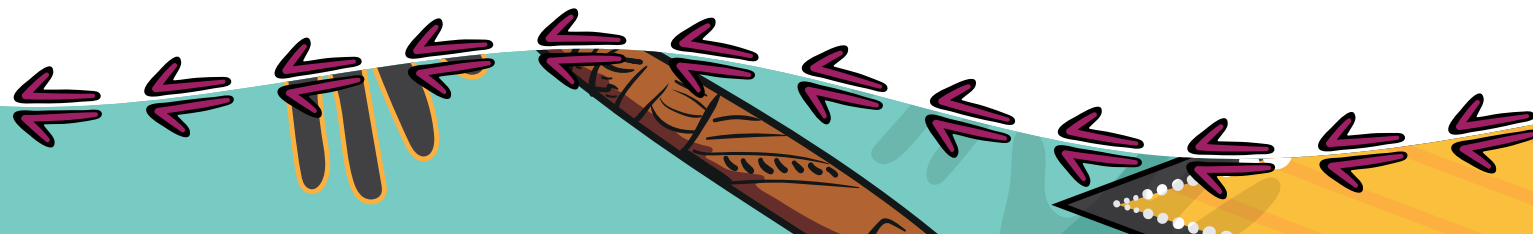
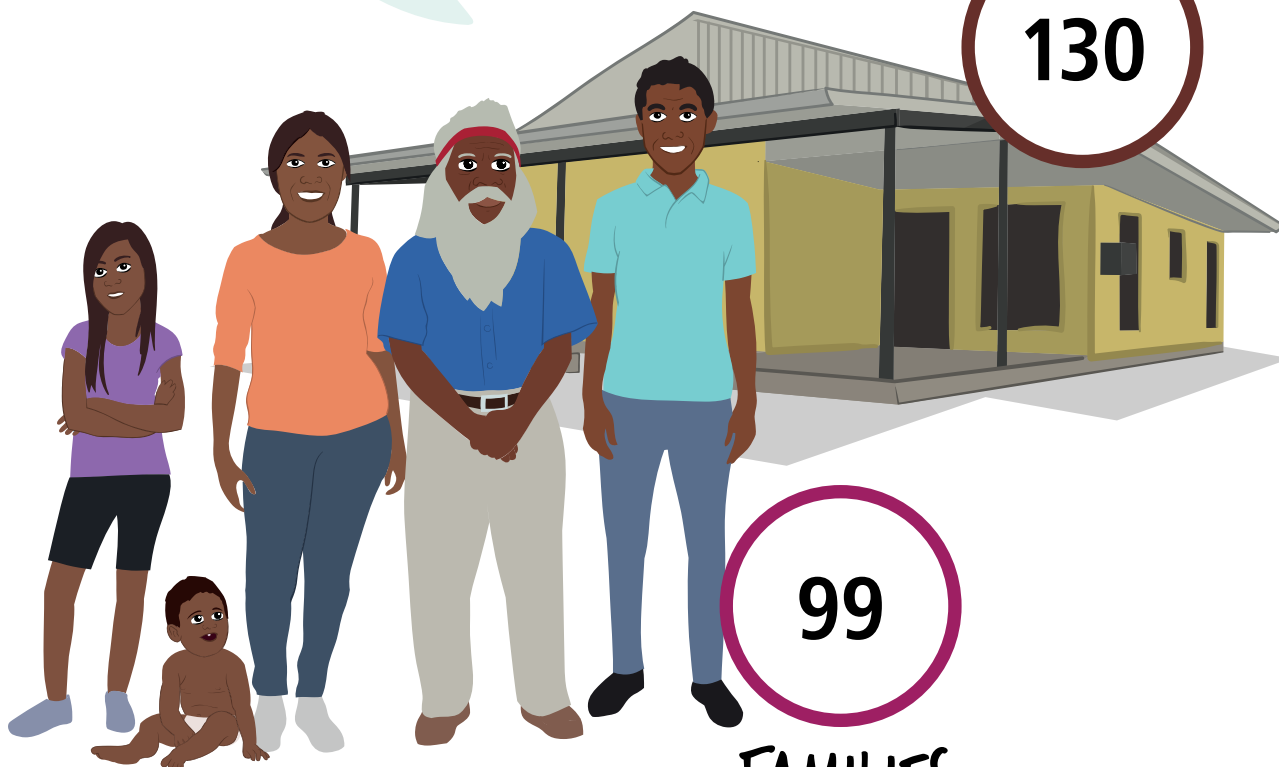
Aboriginal and/or  
Torres Strait  
Islander people

HOUSES

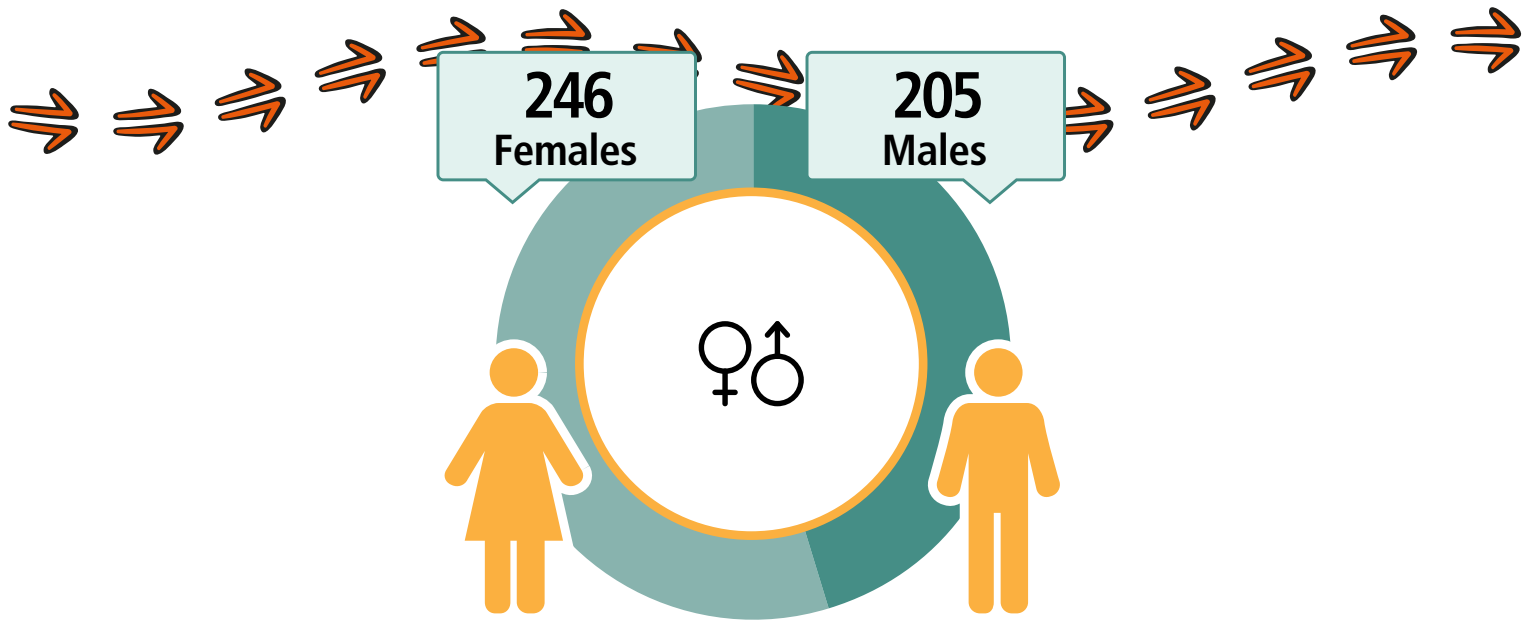
130

99

FAMILIES



# Utopia - Arawerr - Arlparra



## CARED FOR (CHILDREN



65%

**79**  
Working



**\$237**  
Weekly Income



**152**  
Students



**51**  
Completed  
Year 12



Geography: Utopia - Arawerr - Arlparra ILOC

A decorative Aboriginal artwork at the bottom of the page, featuring a stylized landscape with a yellow and orange sun or fire on the left, a teal and black body of water in the center, and a black and white bird or animal on the right. Purple arrows point towards the center from both sides.

# Wutunugurra

LANGUAGE SPOKEN  
Alyawarr

166

People

149

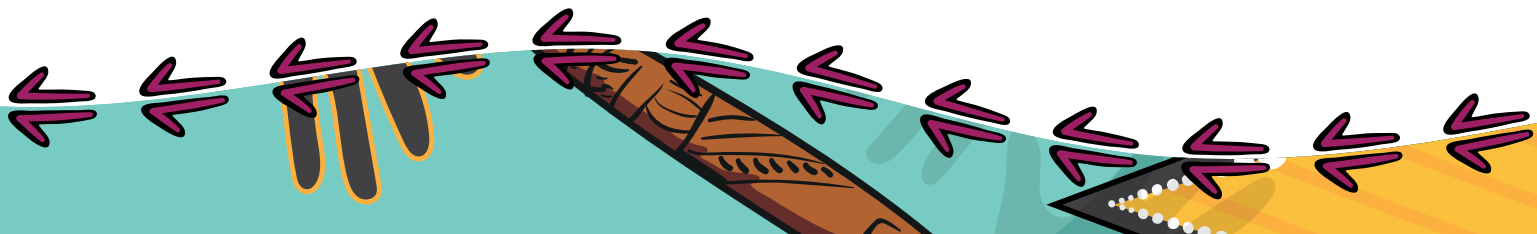
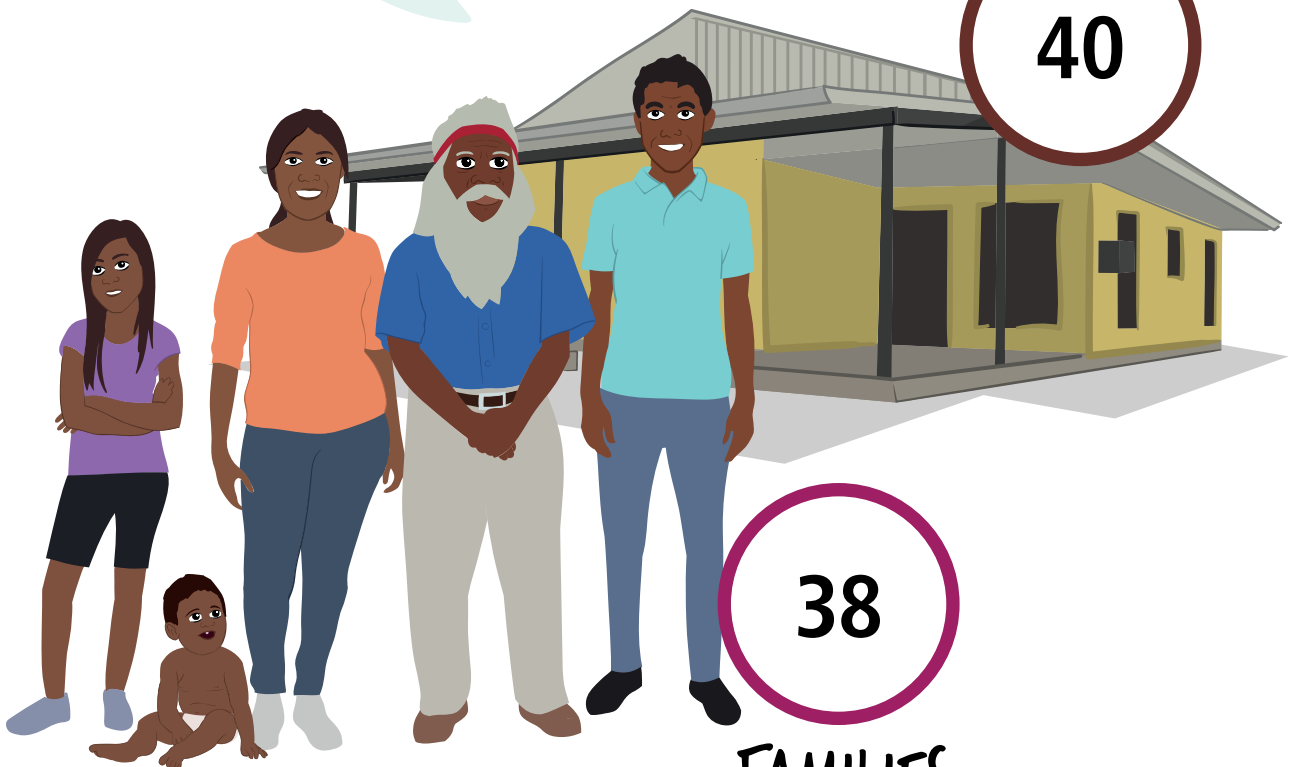
Aboriginal and/or  
Torres Strait  
Islander people

HOUSES

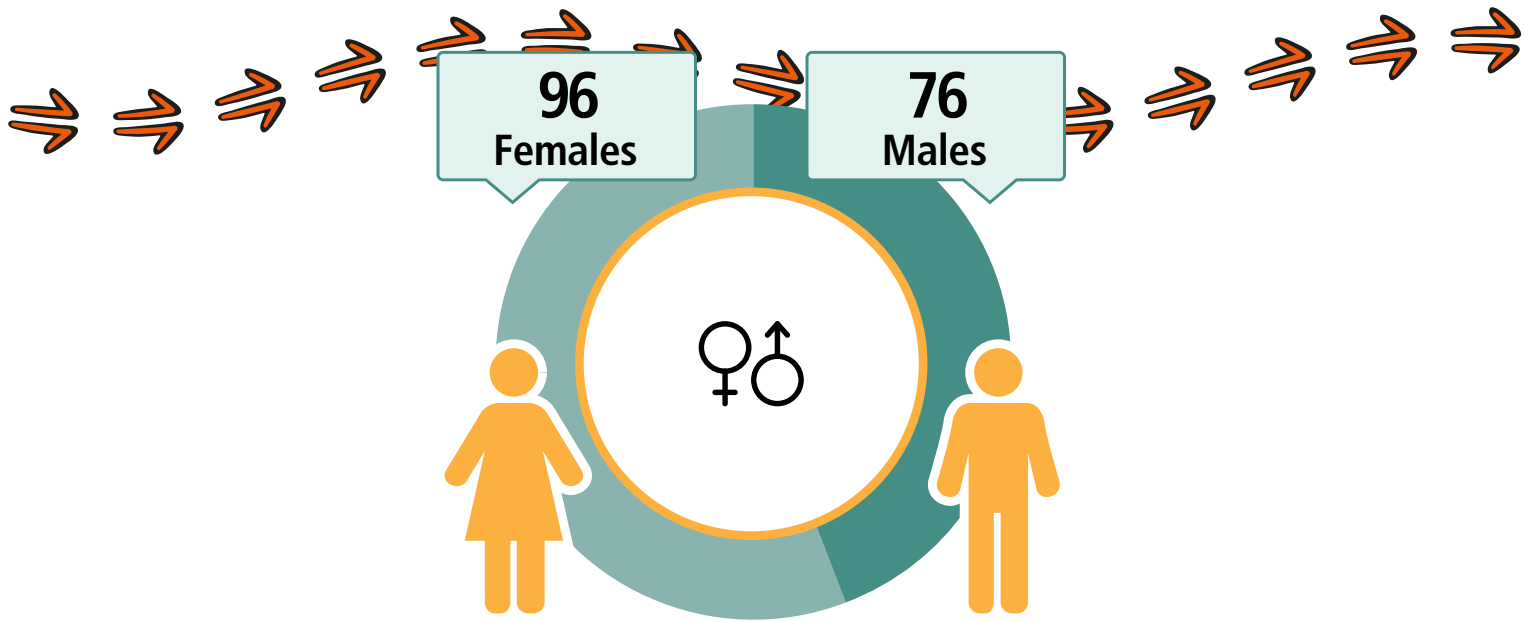
40

38

FAMILIES



# Wutunugurra



## CARED FOR CHILDREN



61%

28  
Working



\$255  
Weekly Income



66  
Students



16  
Completed  
Year 12



Geography: Wutunugurra ILOC

A decorative border at the bottom of the page featuring a stylized Aboriginal art pattern. It includes a yellow and orange striped area on the left, a teal wavy line, and various purple and black arrow-like shapes pointing in different directions.







## Know more

You can find more information on your region for free at [www.abs.gov.au/census](http://www.abs.gov.au/census) using these data products.



Contact the Centre of Excellence for Aboriginal and Torres Strait Islander Statistics

**Phone:** 1300 135 070

**Email:** [CoEATSIS@abs.gov.au](mailto:CoEATSIS@abs.gov.au)

### Disclaimer

The data displayed for the purposes of this publication may slightly differ to other Census products available on the ABS website.

All data in this publication is based on Total People, Total Dwellings and Total Families for each area.

Community names are generally based upon a commonly identified name or combination of names for the area/community. It is acknowledged that some communities may have an alternative name or different spelling.

### Confidentiality

By law, your personal information is kept private and will not be shared with anyone. The ABS makes sure that no one can be identified by the information in this book.



